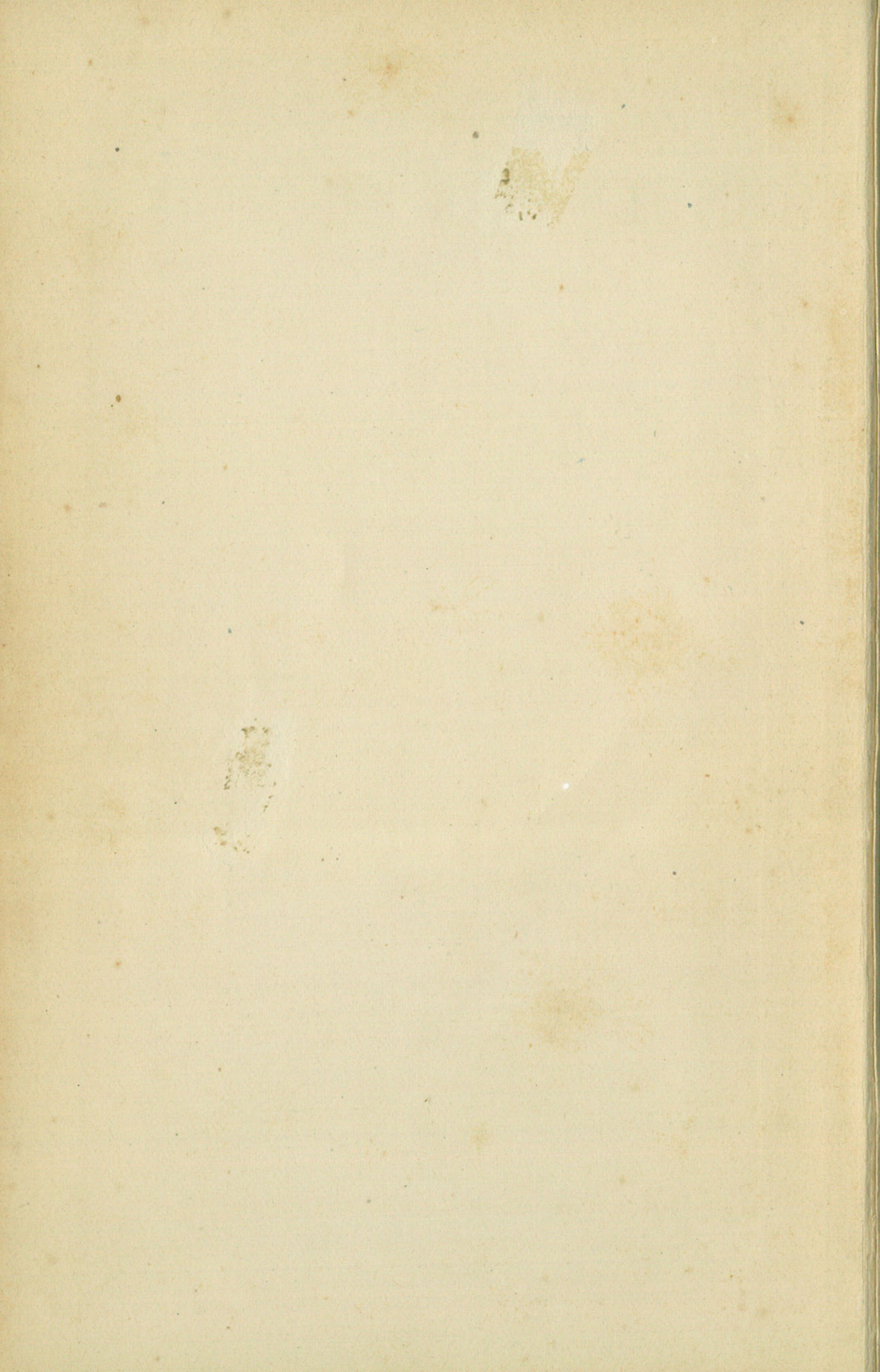


Fernando Perma.



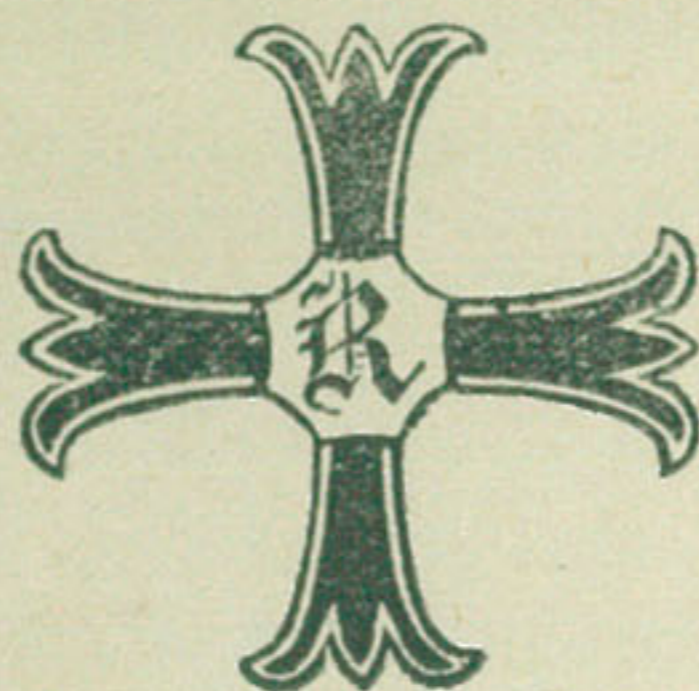
THE
GUIDE TO ASTROLOGY

CONTAINING
A COMPLETE SYSTEM
OF
GENETHLIACAL ASTROLOGY

In One Volume.

BY
RAPHAEL,

*The Astrologer of the Nineteenth Century,
Author of the "Prophetic Messenger," &c., &c*



London:
W. FOULSHAM & CO.,
4 PILGRIM STREET, LUDGATE HILL, E.C.
1905.

Price Two Shillings and Sixpence.

PREFACE.

THIS volume originally appeared in two volumes, as "The Guide to Astrology, Vols. I. and II.," and were sold separately. They have now been rewritten, revised, and made into one volume, complete in itself, so far as the Astrological part of a Nativity is concerned. Information, not previously published by myself, on "Birthday Figures" and "Transits" is given, which the reader will find useful and reliable to a very large extent.

The most unsatisfactory part of Astrology is that dealing with "Directions," or the "Calculation of Future Events." At present there is no system known that will give *reliable* results, but the method taught in this volume will be found to be more accurate than any other known system, yet even here there appears to be something lacking, some "missing link" which would explain why some directions fall out exactly and like a thunderclap, and others pass without any appreciable event. Why this is, no one can tell. Perhaps it is a wise provision of Providence that it is so, on account of the fear and dread of misfortune which seem inherent in the human heart. To know that certain death or misfortune awaited one at a certain time, would drive to madness or suicide a very large majority of the inhabitants of this earth; and in this way "True Astrology" would be a terrible scourge, compared with which, the bloodiest wars, or the greatest natural catastrophes would be as nought.

All through the book I have done my best to make everything as simple and plain as possible, so that the youngest student, or most illiterate person can readily understand.

Edwin Raphael.

London, Xmas, 1905.

CONTENTS.

	<i>Page</i>
Preface	3
The Symbols Explained	5
The Nature of the Aspects	6
The Nature and Quality of the Signs of the Zodiac	6
The Measurement of the Planetary Aspects	7
The Orbs of the Planets	9
The Mundane Houses of the Heavens	10
Persons Produced by the Signs of the Zodiac	13
The Form of Body Given by the Planets in the Signs	15
The Essential and Accidental Dignities	26
The Use of An Ephemeris	28
How to Erect a Map of the Heavens	30
How to Place the Planets in the Map	34
The Nature of Uranus and its Aspects	40
" " Saturn " " 	46
" " Jupiter " " 	51
" " Mars " " 	55
" " Sun " " 	58
" " Venus " " 	61
" " Mercury " " 	64
" " Moon " " 	66
The Planet Neptune	67
The Term Elevation	69
Advice	70
How to Judge a Nativity	72
Whether a Child will Live or Die	73
The Health	74
The Mental Qualities	77
The Money Prospects	79
The Employment	82
Of Marriage	84
Of Children	87
Travelling	90
On the Selection of a House	92
Friends and Enemies	95
The Kind of Death	97
Directions; or, Calculating Future Events	99
An Example of Working the Directions	102
The Effects of the Directions of the ☉ and ♃	105
The Directions of the Planets	114
Solar Returns or Birthday Figures	117
Transits and Eclipses	121
A Short Astrological Dictionary	127

THE GUIDE TO ASTROLOGY.

PART FIRST.

CHAPTER I.

THE SYMBOLS EXPLAINED.

LEARN, practice, and understand the following:—That the planets are nine in number, and are thus named and symbolised: ♆ Neptune; ♃ Herschel; ♄ Saturn; ♃ Jupiter; ♀ Mars; ☉ The Sun; ♀ Venus; ☿ Mercury; ☾ the Moon.

The Zodiacal signs are as follow:—

Northern	♈ Aries	Southern	♎ Libra
	♉ Taurus		♏ Scorpio
	♊ Gemini		♐ Sagittarius
	♋ Cancer		♑ Capricorn
	♌ Leo		♒ Aquarius
	♍ Virgo		♓ Pisces

Each sign contains 30°, which, multiplied by the twelve signs, gives 360°, being the total number of degrees contained in the Zodiac. The reason the ancients divided the Zodiac into 360° appears thus: that the solar year measures 365 days, and the lunar year 355, the mean of which is 360, the number of the degrees in the Zodiac.

The Planetary Aspects.

∨ Semisextile	△ Trine
∠ Semisquare	◻ Sesquiquadrate]
* Sextile	± Biquintile
Q Quintile	▽ Quincunx
◻ Square	♌ Opposition
	P Parallel of Declination

There is also the position, ♌ Conjunction.

Of the Nature of the Aspects.

The following conjunctions of the planets are good in power and effect:—♄ ♌ ♃, ♁, ♂, ☉, ♀, ♆, or the ♃; ♀ ♌ ♆, or the ♃; ♆ ♌ ♃. The remaining ♌'s are all evil more or less, and which will be fully explained in the chapters on

“The Effects of the Aspects.”

The ∨ Semisextile is always good.

The ∠ Semisquare is always evil.

The * Sextile is always good.

The Q Quintile is slightly good.

The ◻ Square is always evil.

The △ Trine is always good.

The ◻ Sesquiquadrate is always evil.

The ± Biquintile, the same in effect as the Quintile.

The ▽ Quincunx is evil.

The ♌ Opposition is always evil.

The P Parallel, this is like the ♌ in nature.

The relative power or potency of the aspects is approximately as follows:—The most powerful is the ♌, next to this the ♌, then the △, ◻, *, ◻, P, ∠, ∨, Q, ±, and ▽.

Of the Nature and Quality of the Signs of the Zodiac.

The signs are classified and divided as follow:—

- 1 (Masculine Signs—♈, ♀, ♁, ♌, ♃, ♄.
 Feminine Signs—♊, ♋, ♍, ♎, ♏, ♐.
 2 (Fiery Signs—♈, ♁, ♃; earthy—♊, ♍, ♏; airy—♌, ♎, ♏; watery—♋, ♍, ♐.

- 3 (Signs of *Short Ascension*—♄, ♁, ♃, ♅, ♁, ♁.
 Signs of *Long Ascension*—♁, ♁, ♁, ♁, ♁, ♁.
 4 (*Moveable and Cardinal Signs*—♅, ♁, ♁, ♄.
Fixed Signs—♁, ♁, ♁, ♁.
 5 (*Common Signs*—♁, ♁, ♁, ♃.
Fruitful Signs—♁, ♁, ♃.
 6 (*Barren Signs*—♁, ♁, and ♁.
Double-bodied Signs—♁, ♃, and the first half of ♁.
 7 *Equinoctial Signs*—♅, and ♁.
 8 *Tropical Signs*—♁, and ♄.

Aspects formed in the cardinal signs are the strongest; next to these, in the fixed signs; and lastly, and least in power, are those formed in the common signs.

NOTE.—*The young student should study well the foregoing divisions, as a perfect knowledge thereof is necessary in judging a nativity.*

[CHAPTER II.

CONCERNING THE MEASUREMENT OF THE PLANETARY ASPECTS.

THE whole Zodiac contains 360 degrees, or twelve signs of 30 degrees each. The signs run in order thus, and remain so always:—

♅ ♁ ♁ ♁ ♁ ♁ ♁ ♁ ♁ ♁ ♁ ♁

Now from ♅ 0° to ♁ 0° is 30°; from ♅ 0° to ♁ 0° is 60°, or from ♅ 15° to ♁ 15° is 60°; from ♁ 0° to ♁ 0° is 120°; or from ♄ 0° to ♁ 0° is 120°, being four signs apart, and so on with the other signs in like way.

The first aspect (this, properly speaking, is a “position”) we take will be the ♂ conjunction, which is when two or more planets are in the same sign (the nearer they are to each other, the more powerful becomes the aspect—note this with all the other aspects) say, for instance, ♃, Jupiter, is in ♁ 6°, and the ☉ in ♅ 28°, now from ♅ 28° to ♁ 6° is 8°, and thus

the ☉ would be approaching the ♂ of ♃. Observe that a ♂ is more powerful *separating*, than applying; for instance if ♃ be in ♄ 6°, and the ☉ in ♄ 14°, the ♂ of ☉ and ♃ will have more power and effect on the native than if the ☉ were in ♃ 28° and applying to ♃. The planets apply thus:—
 The ☽ applies to all the planets, being the swiftest in motion; ♀ applies to ♀, ☉, ♂, ♃, ♅, ♁, and ♃. ♀ to ☉, ♂, ♃, ♅, ♁ and ♃. ☉ to ♂, ♃, ♅, ♁, and ♃. ♂ to ♃, ♅, ♁ and ♃. ♃ to ♅, ♁ and ♃. ♅ to ♁ and ♃. ♁ to ♃. ♃ to no planet it being the slowest in its motion. Exception: a planet retrograde, *i.e.*, moving backward in the signs, as from ♄ to ♃, can apply to another, as ♁ retrograde can *apply* and meet the ♂, or aspect of any other planet, even the ☽.

“To apply” means “to approach.”

The second aspect is the ∨ (semisextile), or 1 sign, or 30° distant. Thus:—♂ in ♄ 5°, and ♅ in ♀ 5° will be 30°, or 1 sign apart.

The third aspect is the ∠ (semisquare), or 45°, or 1½ signs apart. Thus:—♀ in ♄ 15°, and ♃ in ♁ 0°, will be 45°, or 1½ signs apart; for, from ♄ 15° to the end of ♄ will be 15°, and ♀ contains 30°, then 15° + 30 = 45°, as ♁ 0° is at the end of ♀. *Observe this example with all the other aspects.*

The fourth aspect is the ✱ (sextile), or 2 signs, or 60° apart. Thus:—♂ in ♄ 4°; and ♃ in ♃ 4°—will be 2 signs or 60° apart.

The fifth aspect is the Q (quintile), which is 72° apart, or one-fifth part of the whole Zodiac. Thus:—♂ in ♃, 18°, and ☉ in ♄, 0°—will be 72°, and forming the aspect of ☉ Q ♂.

The sixth is the □, or 3 signs, or 90° apart.

The seventh is the △ or 4 signs, or 120° apart.

The eighth is the ◻ or 4½ signs, or 135° apart.

The ninth is the ± or 144° apart.

The tenth is the ∇ or 150° apart.!

The eleventh is the ♂ or 6 signs, or 180° apart.!

The twelfth is the P, or an equal distance in declination, either north or south from the equator.

The planets cannot be more than 180° apart, and they are then in opposition, after which the distance between them decreases.

NOTE.—The fiery signs are in trine aspect to each other. Thus γ is in \triangle to Ω and \uparrow , and Ω is in \triangle to γ and \uparrow , and \uparrow is in \triangle to γ and Ω . The same is the case with the earthy, airy, and watery signs. The common, cardinal, or moveable and fixed signs are in \square and \wp to each other, thus— \wp is in \square to Ω , and in \wp to \mathcal{M} , and so on with the others.

CHAPTER III.

THE ORBS OF THE PLANETS.

THESE are the number of degrees apart in which one planet acts on another, and this requires very careful handling and consideration, for the orbs are *less* when the planets are *applying* to an aspect than when separating.

The orbs of \mathcal{H} , \mathcal{h} , \mathcal{V} , \mathcal{M} , \mathcal{Q} , and \mathcal{J} , when *applying*, are about 6°, and when separating from an aspect, they may be reckoned as 8°. They must be reckoned thus:—Suppose \mathcal{J} is *applying* to a \mathcal{M} of \mathcal{H} or \mathcal{h} , then when \mathcal{J} gets within 6° of either of these planets, the aspect will begin to have effect, and will last until \mathcal{J} is 8° past it. It is the same with the other planets. The \odot and \mathcal{D} have larger orbs. You may reckon the \odot when *applying* as 12°, and when *separating* as 17°; and the \mathcal{D} , 8° when *applying*, and 12° when separating from an aspect. These orbs apply only to the following aspects, viz., the \mathcal{M} , \mathcal{X} , \square , \triangle , and \wp . The *minor* aspects, viz., the \mathcal{V} , \mathcal{Q} , and \pm , I consider only when the planets are within 2° *applying*, and 3° *separating*. The \mathcal{L} and \square are to be reckoned 3° when *applying*, and 4° when

separating, that is, with the *planets*; the ☉ and ♃ may be allowed an extra 1°. This is a most difficult subject, and the above is as near as I can give it, judged by experience. With respect to the P, I do not allow more than 2° either way, thus: supposed ☉'s Dec. 18° N., and ♃'s Dec. 16° S., I should consider it as ☉ P ♃. The mundane houses (1st, 2nd, 3rd, &c.) have orbs. The way in which I consider these, is this—find the number of degrees between the two cusps, and divide by 3, and reckon one-third as the orb of the house—thus—in the map, page 37, the number of degrees between the cusps of the 10th and 11th houses is 39°, which divided by 3 gives 13°, so that I should not consider any planet in the 10th house which was not more than 13° past the cusp of the 11th. If we take the ascendant we shall find the number of degrees contained in this house to be approximately 21°, a third of which is 7°, consequently a planet would not be clear of the 2nd house unless it were more than 7° above its cusp.

CHAPTER IV.

CONCERNING THE MUNDANE HOUSES OF THE HEAVENS, AND THEIR POWER AND SIGNIFICATION.

THE ancient philosophers divided the canopy of heaven into twelve equal parts, which they called "houses," or "mansions," of the heavens.

The position of the "houses" are shown in the following diagram, page 12.

The First House.—This rules the personal appearance of the native, and influences the mind to a certain extent, especially if any planet be therein. It is also called the "ascendant." If an evil planet be therein, there will be a scar or mole on the head or face, as this house rules these parts of the body.

The Second House.—This rules the native's wealth and worldly goods chiefly, also his liberty. It also rules the neck and throat.

The Third House.—This denotes the brothers and sisters of the native; short journeys, chiefly by rail or road, letters, writings, neighbours, and any planet therein has some influence on the mind. The parts of the body it rules are, the hands, arms, and shoulders.

The Fourth House.—This signifies the father of the native, inheritance or property, also the condition and position of the native at the close of life. It is a very important house, and should be closely studied. It rules the stomach and the breast.

The Fifth House.—This denotes the offspring of the native, also his success in betting, speculation and hazardous games—the pleasures he enjoys and the wealth of his father. It rules the heart and back.

The Sixth House.—This concerns the native's sickness, and the diseases to which he is most liable, also his servants and inferiors, and signifies uncles and aunts. It rules the intestines or belly.

The Seventh House.—This denotes love and matrimony, wife or husband, public enemies, law suits and contentions, partnership, and all dealings with persons (not relatives) in general. It rules the reins and loins.

The Eighth House.—This is the house of death, also of wills and legacies, and the estate or dowry of the wife, or husband. It rules the privy parts.

The Ninth House.—This house rules long journeys, or sea voyages, religion, dreams, and visions, also the brethren of the husband or wife. It governs the hips and thighs.

The Tenth House.—This denotes the native's mother, also his honour, trade and profession. It rules the knees and hams.

The Eleventh House.—This rules the native's friends, hopes and wishes, also the wealth of the mother. It governs the legs and ankles.

wealth
also
necks
throat

letters
short
journeys
hands
arms
shoulders

father
inheritance
stomach
breast

offspring
pleasures
wealth
heart
back

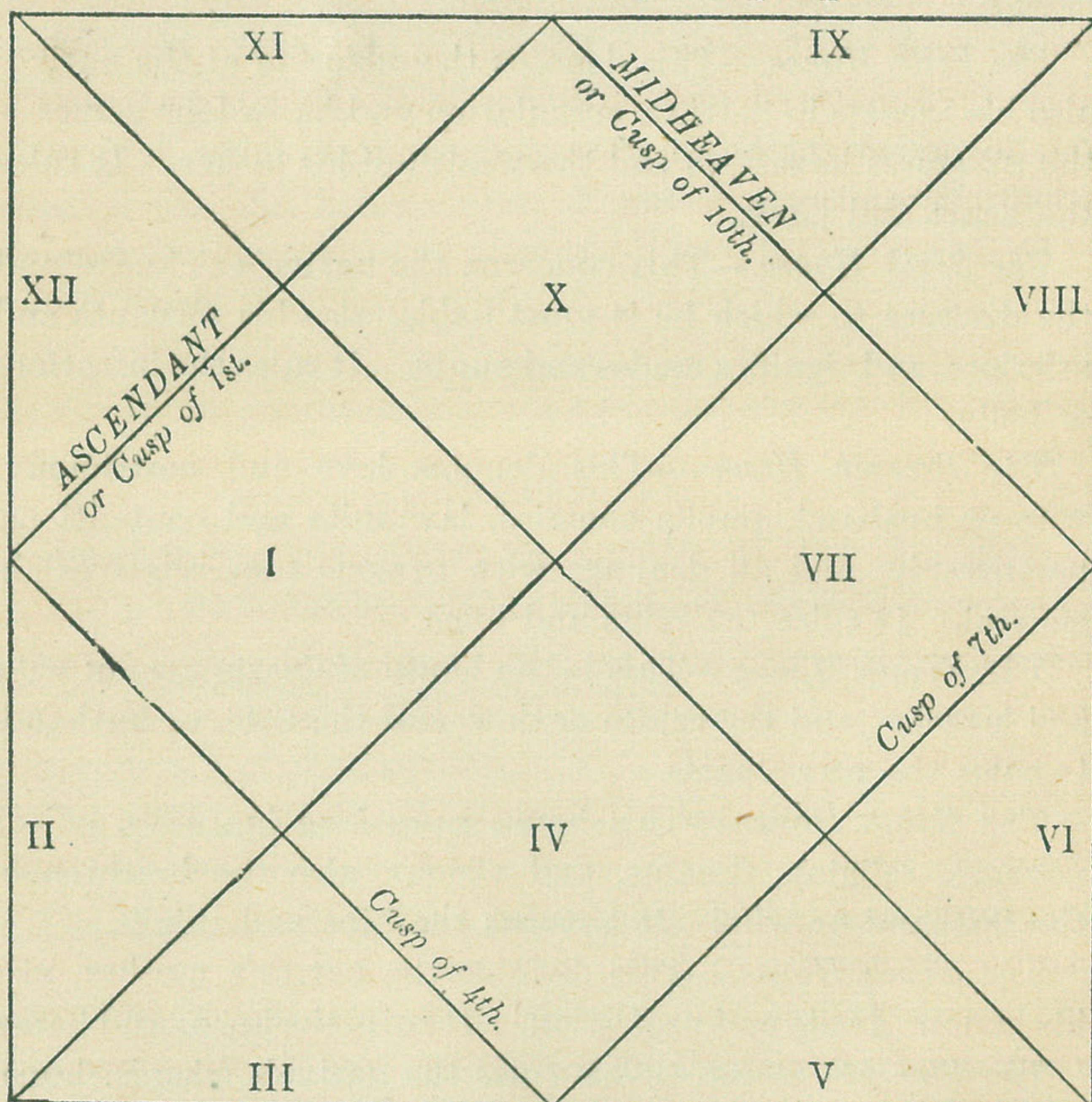
sickness
diseases
intestines
belly

love
matrimony
partnership
loins

death

The Twelfth House.—This denotes the secret and private enemies of the native, imprisonment, assaults on the person by robbers or highwaymen. It rules the feet and toes.

NOTE.—The strongest houses are the 1st and 10th, next the 11th, 7th, and 4th, then the 2nd, 3rd, 9th, and 12th, and lastly, the 5th, 6th, and 8th. The 1st, 3rd, and 9th, may be called the “intellectual houses,” as planets therein always influence the *mind*. The 1st, 4th, 7th, and 10th, are called *angles*, and represent the four cardinal points of the compass, thus, the 1st is East, 7th, West, 4th is North, and 10th, South. The 2nd, 5th, 8th, and 11th, are termed *succeedent* houses, as they succeed the angles; the 3rd, 6th, 9th, and 12th, are called *cadent* houses, that is, falling from the *angles*.



No. 1.

CHAPTER V.

DESCRIPTION OF PERSONS PRODUCED BY THE SIGNS OF
THE ZODIAC ASCENDING AT BIRTH.

♈ ARIES.—Middle stature; rather lean; long face and neck; strong limbs; hazel eyes; coarse hair; dark, swarthy, or ruddy complexion; sandy whiskers; quick sight. *Disposition*: Angry, violent, and quarrelsome; ambitious, aspiring; quick, intrepid, and determined.

♉ TAURUS.—Short, thick-set person; full face and eyes; short, thick neck; large nose and mouth; swarthy, ill-complexioned; broad, strong shoulders; dark hair and eyes, the hair sometimes curling. In a female's nativity, it produces a more comely person; plump, fleshy, dark, curling hair, and black eyes. *Disposition*: Conceited, bigoted, angry and violent; ill-natured and unfeeling, gluttonous, great eaters, and lovers of their own ease and comfort; fond of drink; a bad husband or wife.

♊ GEMINI.—Tall, straight body; long arms and hands; dark, sanguine complexion; dark brown hair; hazel eyes; quick sight; active look; walk, smart and quick. *Disposition*: Scientific, judicious, fond of reading, ambitious of fame, moderate and temperate in eating and drinking, generally respected, and good members of society.

♋ CANCER.—Moderate stature; face, round; pale, whitish complexion; small features; sad-brown hair; constitution not strong; eyes grey, or very light blue. *Disposition*: Timid, inactive, dull, void of energy; careless, harmless, inoffensive, and feeling.

♌ LEO.—A large, full stature; big bones; full, broad shoulders, well set; grey eyes, quick sight; light hair and eyebrows; head, large and round; complexion, sanguine or ruddy. *Disposition*: Bold, firm, and generous; ambitious and aspiring; free and courteous; quick in anger, but soon over; fond of sports and recreations and bodily exercise; active, intrepid, and very determined.

♍ VIRGO.—A slender body, somewhat above the middle height; a ruddy, dark complexion; face round; dark hair and eyes; well formed but not handsome. *Disposition*: Ingenious; fond of learning and curiosities; ambitious; quick and active; given to the study of languages; of a good utterance, and graceful elocution.

♎ LIBRA.—A tall, straight body; rather slender, hair brown and smooth, sometimes jet black; face, round; features well made; fine, clear complexion; dark eyes; if a female, good looking. *Disposition*: Ambitious, talkative; fond of the other sex; and the temper tolerably even.

♏ SCORPIO.—Middle stature; thick well-set body, strong and robust; face, large and broad; dark, palish complexion; hair, dark brown, curling and plentiful; short, thick neck; ill made feet; sometimes bow-legged. *Disposition*: Reserved, ambitious, and violent; furious and bloodthirsty when provoked; deceitful and conceited; active, intrepid, and dauntless; void of feeling, and brutish.

♐ SAGITTARIUS.—Well-formed, handsome person, rather tall; high forehead; long nose; clear, hazel eyes; ruddy complexion, free and open countenance; hair, chestnut or light brown; face rather long. *Disposition*: Bold, active, and generous; free and good-hearted; fond of sports and recreations; ambitious of honour and doing good; laudable in actions, and generally to be depended upon.

♑ CAPRICORN.—A short slender person, not well formed; long, thin face; thin beard; chin, long; black, or dark coarse hair; narrow chest; long, small neck; weak knees, and of a bad gait generally. *Disposition*: Sharp, subtle, and capricious; covetous, envious, jealous, crafty, selfish, and unstable.

♒ AQUARIUS.—Middle stature; stout, well set and strong; long visage; sanguine complexion; fair flaxen hair; dark eyes, and generally very handsome, especially if a female. *Disposition*: Stable, good, kind-hearted; scientific; fond of earning and recreation; gentle, and temper even.

♓ PISCES.—Short, thick stature; fleshy, pale face; eyes

sleepy and dull; hair, light brown; arms and legs short; ill-made large feet; constitution sickly and weak. *Disposition*: Dull, indolent, and lazy: caring for nothing; loving their own ease, and slothful.

NOTE.—*The foregoing descriptions are only to be taken when there are no planets in or near the ascendant.*

CHAPTER VI.

THE FORM OF BODY GIVEN BY THE PLANETS IN THE TWELVE SIGNS.

Aries,

♁ in *Aries*.—Rather tall stature; lean, and well made; light hair; blue or grey eyes; ruddy complexion; strong constitution; ambitious, and quick in anger.

♂ in γ .—Middle stature; ruddy complexion; large bones; thin and spare; dark hair, and small eyes; inclined to quarrelling and contentious.

♃ in γ .—Middle stature; rather lean; ruddy complexion; oval visage; flaxen hair, quick eye, high nose; the disposition obliging and courteous.

♄ in γ .—Middle stature; well set; big bones; swarthy complexion; the hair light and curling; grey eyes; sharp sight, and austere countenance; very quick in anger; fond of combat, in which he is usually successful.

♅ in γ .—Rather short stature; well made; complexion good; very light hair; generous to excess, even to an enemy; valorous, and to be trusted.

♆ in γ .—Middle stature; rather slender; good complexion; fair hair, and blue eyes; of a quick, restless, changeable disposition; fond of the opposite sex, and liable to acts of indiscretion.

♇ in γ .—Rather tall, spare, and slim; long neck; oval face; light brown curling hair; swarthy complexion; of a

restless, ambitious disposition; addicted to falsehood and theft; a most pregnant wit and fancy, good orator and dramatist. I am of opinion that our great poet Shakespeare was born with Mercury rising in Aries.

♃ in γ .—Indifferent stature; round face; light brown hair; well made; grey eyes, and a good complexion. In disposition changeable and uncertain; fond of travelling, and restless.

Taurus.

♁ in *Taurus*.—Short, thick-set person; dark hair and eyes, rather fleshy; pale or swarthy complexion; short neck; deep-set eyes; passionate, boasting, and revengeful; a person to be avoided, conceited and luxurious.

♁ in δ .—Dark complexion; rough skin; middle stature; dark hair; feet and hands ill made; a dull, sottish person; very revengeful, and of a secret and murderous disposition.

♃ in δ .—Well set, middle stature, and compact; dark complexion; brown eyes; dark hair; short thick neck; disposition, good, generous, and firm.

♁ in δ .—Middle stature; inclining to shortness and corpulency; grey eyes; round face; ruddy complexion; dark hair; wide mouth; vicious, gluttonous, and violent; conceited; void of feeling; and very ill-natured.

☉ in δ .—Short, well-set person; light brown hair; grey eyes; great nose; large mouth; opinionative; conceited, proud, improvident, and bold.

♀ in δ .—A comely person; moderately fleshy; good-looking; fair; sanguine complexion; light brown hair; temper good; captivating; fond of females, by whom he is highly respected.

♁ in δ .—Middle stature; full face; brown hair; swarthy complexion; grey or hazel eyes. In disposition, talkative; loving his own ease; improvident; indulging in drink to excess.

♃ in δ .—Well-made body; rather short, corpulent, and strong; pale complexion; brown hair, and grey eyes; of a

mind and obliging disposition, and generally respected ; fond of the opposite sex.

Gemini.

♃ in *Gemini*.—Produces a tall, thin stature ; light brown hair, and grey eyes ; well made ; quick step ; active and nimble ; fond of science ; of a good disposition ; eccentric in behaviour ; generous and inventive.

♄ in ♊.—Rather tall in stature ; oval visage ; dark brown hair ; dull, swarthy complexion ; ingenious ; fond of the goods of this world.

♅ in ♊.—Well-composed body ; tall ; sanguine complexion ; open and frank ; fond of science and society.

♆ in ♊.—Rather tall stature ; brown hair ; grey eyes ; ruddy or sanguine complexion ; strong body ; big bones and long arms ; rash, free, and generous ; ambitious and aspiring.

☉ in ♊.—Well-made body ; sanguine complexion ; light brown hair ; large grey eyes ; good disposition, courteous and affable to all ; fond of science, and a philanthropist.

♁ in ♊.—Middle stature ; thin and handsome ; clear, sanguine complexion ; light brown hair ; and generally blue eyes ; *disposition*: mild and good ; free and kind to all ; generally beloved and respected.

♂ in ♊.—Tall, slender, well-composed person ; dark brown hair ; hazel eyes ; high nose ; long arms, hands, and fingers ; very quick and active ; possessing a rare mind for science ; a good orator ; delighting in art, science, and literature ; of a moderately good disposition.

♃ in ♊.—Well-composed person ; rather tall ; brown hair ; good complexion ; rather pale ; agreeable and talkative ; very ingenious ; somewhat subtle and crafty, especially if ♄ alone aspects the moon.

Cancer.

♄ in *Cancer*.—Produces a short, thick-set, corpulent body ; pale complexion ; dark brown hair ; and grey eyes ; conceited ;

bigoted ; fond of drink ; violent, eccentric, and ungovernable.

♃ in ☉.—Middle stature ; lean and thin ; dark hair ; weak, sickly constitution ; deceitful and cunning in behaviour ; given to drink ; and generally a wretched, miserable being.

♄ in ☉.—Middle stature ; pale complexion ; oval face ; dark brown hair, and brown eyes ; obliging and courteous ; rather conceited ; constitution sickly and unhealthy.

♁ in ☉.—Personates bodies sometimes deformed, or void of due proportions ; the complexion pale and vitiated ; brown hair ; grey eyes ; of a sottish, heavy disposition ; given to thieving and drink ; revengeful and ill-natured.

☉ in ☉.—Short stature ; sickly, pale complexion ; freckled ; brown hair, and grey eyes ; fond of females ; a lover of ease and pleasure, but free and generous to excess, and given to acts of intoxication.

♀ in ☉.—Short stature ; rather fleshy ; round face ; pale complexion ; light hair, and blue eyes ; a comely, good-looking person ; gentle and mild, free and improvident ; careless and indolent ; fond of women and drink.

♆ in ☉.—Short stature ; pale complexion ; black hair ; thin face ; sharp nose, and small grey eyes. In disposition, changeable and uncertain ; fickle, and not unfrequently light-fingered.

♃ in ☉.—Middle stature ; well-made, and fleshy ; fair complexion ; round face ; rather pale ; brown hair ; of a sociable, pleasing, courteous disposition ; kind to all ; harmless, and respected.

Leo

♁ in *Leo*.—Makes a full-sized stature ; broad, strong shoulders ; light brown hair, and sandy whiskers ; firm walk. In disposition, generous and free ; eccentric ; fond of military actions ; rather proud, and self-conceited.

♃ in ♌.—Large stature ; shoulders broad and strong ; the hair brown ; large bones, and body lean ; the aspect surly

and austere. In disposition, passionate and revengeful, boasting and conceited.

♃ in ♏.—A strong well-proportioned person; tall; the hair light brown; sanguine complexion; the eyes full and commanding. In disposition, free, generous, noble, and courageous.

♂ in ♏.—A tall stature; large limbs, endued with strength and agility; ruddy complexion; light hair; large grey eyes; firm and intrepid walk. *Disposition*: passionate, noble, and generous; proud, austere, and fond of field sports.

☉ in ♏.—A strong, well-proportioned body; fair, sanguine complexion; light brown or sandy hair; full face and large eyes; an honest, faithful person; ambitious and aspiring; rather proud, and careful of affronts.

♀ in ♏.—Rather tall in stature; well made; round face; full eyes; clear complexion; hair light brown or flaxen; rather passionate, but generous and free; kind to all; although somewhat proud and stubborn.

♁ in ♏.—Large stature; rather lean; large eyes and swarthy complexion; round face; light brown hair; broad and high nose. In disposition, hasty, choleric, proud and ambitious.

♃ in ♏.—Tall stature; well-made; large bones; sanguine complexion; brown hair; large full eyes; aspiring and lofty in disposition; ambitious and persevering

Virgo.

♁ in *Virgo*.—A short stature; dark hair and eyes; lean body; small limbs; of an eccentric turn of mind; fond of curiosities and novelties; studious; scientific; but mean and close in his worldly affairs.

♃ in ♍.—Tall, spare body; dark brown or black hair; swarthy complexion; austere, melancholy countenance; retentive of anger; curious in ideas; fond of science and learning.

♃ in ♀.—Full stature; hair black or dark brown; ruddy complexion, but not clear. In disposition, choleric, ambitious, boastful and improvident.

♂ in ♀.—Middle stature, well proportioned; dark brown hair; ruddy complexion; grey eyes and round face. *Disposition*: very angry and choleric; hasty and revengeful; conceited and very irritable.

☉ in ♀.—Tall, well-proportioned stature, rather slender; a good complexion; brown hair and grey eyes; ingenious and cheerful; scientific and free.

♀ in ♀.—Tall, well-made body; brown hair; oval face; sanguine, or ruddy complexion; quick in speech; active and inspiring; fond of music and singing; and generally respected.

♁ in ♀.—Tall, slender person; dark brown or black hair; long face; small dark eyes; quick, active and nimble; very much addicted to science, literature, and the acquisition of languages; a good orator; subtle and careful of their own interest.

♃ in ♀.—Middle stature; pale complexion; dark brown or black hair; pensive; fond of distinction; loquacious; and often covetous and imposing.

Libra.

♃ in *Libra*.—Produces a full stature; strong, well-made body; round face; light hair, and sanguine complexion; of a scientific, ambitious turn of mind; soon angered; and eccentric in behaviour.

♃ in ♁.—Tall person; rather handsome; brown or auburn hair; oval face; prominent nose and forehead; proud, careful and fond of argument.

♃ in ♁.—Well-made person, rather tall and slender; full eyes; light brown hair; clear complexion; of an open, free and generous disposition; willing and anxious to oblige everybody.

♂ in ♁.—Well-made person; tall; light brown hair; oval

visage ; sanguine or ruddy complexion ; quick in anger, but of a pleasing countenance ; ambitious and fond of recreation.

☉ in ♌.—Middle stature ; oval face ; ruddy, cheerful complexion ; light hair and full eyes ; extravagant, bold, free and generous to excess ; proud, and possessing a good opinion of himself.

♀ in ♌.—Tall, graceful person ; sanguine complexion ; light brown hair, and blue eyes ; very good looking ; of an obliging, courteous disposition ; generally beloved and respected.

♁ in ♌.—Well-composed body, rather full than otherwise ; light brown hair and grey eyes ; ruddy or sanguine complexion ; an ingenious, thrifty person, of pleasing manners ; a good orator ; and a lover of all arts and sciences.

♃ in ♌.—Well-made person ; light brown hair ; ruddy complexion, and tolerably good looking. In disposition, agreeable and courteous, loving mirth and society ; much beloved and respected.

Scorpio.

♏ in *Scorpio*.—Short and thick-set body ; broad shoulders and ill-made hands ; dark, swarthy complexion ; dark or black hair and eyes ; a malicious, deceitful, cunning person ; given to drink and pleasure ; and generally a most despicable person.

♁ in ♏.—Short stature ; thick, well-set, and strong body ; broad shoulders ; small dark eyes ; a malicious, mischievous person ; given to thieving, and very often in trouble.

♃ in ♏.—Middle stature ; compact body ; dark hair ; fleshy face, and dull complexion. In disposition, arrogant and lofty, ambitious, active and industrious.

♁ in ♏.—Well set, middle stature ; broad face ; complexion dark and swarthy ; hair black and curling ; passionate, rash, and revengeful ; ambitious and aspiring ; excelling in any pursuit.

☉ in ♏.—Square body ; full face ; wide mouth ; dark,

sunburnt complexion, brown hair; reasonably fleshy. In disposition, ingenious, austere, ambitious; a good chemist or doctor.

♀ in ♀.—Represents a well-set body, rather corpulent; broad face; brown hair; blue or grey eyes; fond of drink and evil company; and an enemy principally to themselves.

♁ in ♀.—Short stature; well set; broad shoulders; swarthy complexion; sad brown hair; given to lying, drinking, thieving and possessing many unlaudable qualities; a good and subtle chemist.

♃ in ♀.—Ill-composed person; short, thick and fleshy; obscure complexion; brown or black hair. *Disposition*: sottish, and given to many evil actions, particularly with the opposite sex.

Sagittarius

♄ in *Sagittarius*.—Describes a person of tall stature; light hair and eyes; lofty forehead; good complexion. In disposition generous and free, fond of all sports, and enthusiastic.

♅ in ♄.—Large body; brown hair; rather handsome; lean; ruddy complexion; reserved, yet obliging, and not easily offended.

♆ in ♄.—Tall, upright body; chestnut hair; ruddy complexion; oval face; and the eyes brown; comely and engaging. In disposition, courteous, just and noble; despising mean and sordid actions, fond of exercise and recreation.

♁ in ♄.—Rather tall; well-proportioned body; ruddy or sanguine complexion; brown hair; visage open; quick eye; of a choleric and hasty disposition, yet generous and free; generally successful in cattle and horse-dealing.

☉ in ♄.—Tall, well-made person; oval visage; sanguine complexion; light brown hair; of a high, aspiring, lofty disposition; aiming at great and noble things, generous and free.

♀ in ♄.—Well-proportioned body; clear complexion;

brown hair ; and noble visage ; of a free, generous disposition ; good-natured and obliging ; fond of pleasure and recreation.

♃ in ♃.—Tall stature ; well-shaped, but not corpulent ; large bones, brown hair, ruddy complexion and large nose ; passionate, but soon appeased ; rash in his actions.

♄ in ♃.—Handsome, well-proportioned body ; oval face ; bright brown hair ; ruddy or sanguine complexion ; grey eyes. In disposition, good and generous, passionate but forgiving ; ambitious and aspiring.

Capricorn.

♅ in *Capricorn* denotes one of middle stature ; well-made, short neck, high forehead, dark hair and heavy eyes ; proud, austere, and conceited ; and possessing but few laudable propensities.

♆ in ♄ gives a thin person, of low stature ; rough skin, dark complexion, small eyes, and long visage ; melancholy, peevish, mistrustful, and avaricious ; serious and austere.

♇ in ♄.—Mean stature ; pale, sickly complexion and lean face ; small head ; dark hair ; weakly and infirm ; peevish and desponding ; and generally in trouble.

♈ in ♄.—Short stature ; lean ; ruddy complexion ; small head and thin face ; black lank hair ; ingenious and courageous ; possessing prudence and great determination.

♉ in ♄.—Mean stature ; pale complexion ; brown hair ; oval face ; spare thin body. In disposition, just and good-humoured, gaining respect thereby.

♊ in ♄.—Short stature ; complexion pale and sickly ; thin, lean face ; brown or dark hair and blue eyes. In disposition, courteous and obliging ; fond of the opposite sex to their own detriment.

♋ in ♄.—Mean stature ; thin face ; brown hair ; dusky complexion ; generally bow-legged ; sometimes crippled if ♋ be afflicted by ♆, ♈ or ♅. In disposition, peevish and fickle ; yet acute, sharp and penetrating.

♌ in ♄.—Low stature, and ill-complexion ; the body and face thin and spare, dark brown lank hair ; weak knees ;

possessing no activity; disposed to mean actions and debauchery.

Aquarius.

♁ in *Aquarius* produces a middle stature; brown hair and eyes; well-made and handsome broad face; very ingenious; fond of science and novelties; eccentric; and of a good disposition.

♂ in ♋.—Middle stature; large head and face; hair dark brown; large grey eyes; sober and prudent; fond of science; industrious and persevering.

♃ in ♋.—Middle stature; compact; rather corpulent; the complexion clear; hair dark brown; of a cheerful and obliging disposition; injurious to none; just and merciful; and fond of recreation.

♂ in ♋.—Middle stature; well made; rather corpulent; the hair sandy or red; clear, ruddy complexion; *Disposition*: turbulent and unruly; fond of controversy and determined.

☉ in ♋.—Middle stature; corpulent body; decently composed; round face; light brown hair; clear complexion; in disposition good and just; obliging, but rather proud.

♀ in ♋.—Handsome, well-proportioned person; somewhat corpulent; of a clear, sanguine complexion; the hair brown; but sometimes flaxen; of an open, generous disposition; free and kind, and generally beloved.

♃ in ♋.—Indifferent stature; a good, clear complexion; brown, but sometimes black hair; full face; ingenious; fond of arts and sciences; given to study, researches and inventions; of a pregnant wit, and admirable understanding.

♃ in ♋.—Middle stature; well formed; rather corpulent; brown hair; clear, sanguine complexion; ingenious, courteous and inoffensive; active and inventive.

Pisces.

♁ in *Pisces*.—Low, mean stature; sickly, pale complexion; dark hair and eyes; ill-made hands and feet; bad walk; in disposition, sottish and dull; dejected and despised.

♄ in ♋.—Short stature; pale countenance; hair nearly black; head large and eyes full; contentious and malicious; fraudulent and deceitful in their dealings; sottish and thievish.

♃ in ♋.—Middle stature; fleshy body; obscure complexion; light brown hair; studious, generous, and good-hearted; fortunate in travelling; generally respected, and fortunate.

♂ in ♋.—Mean stature; short and fleshy; hair light brown; complexion bad; large eyes. In disposition, given to vicious actions; sottish, and prone to lewdness; idle; delighting in broils and wicked actions.

☉ in ♋.—Rather short stature; round face; pale, sickly complexion; light brown hair, and grey eyes; rather corpulent; a general lover of the female sex; addicted to drink and gambling; extravagant and prodigal.

♀ in ♋.—Middle stature; inclining to shortness; plump and fleshy; good complexion; hair light brown, and blue eyes; the face round. In disposition affable and good-natured; just in their dealings, and respected.

♁ in ♋.—Low stature; brown hair; thin face; sickly complexion; generally very hairy upon the body. In disposition, repining, fretful, drinking and disconsolate.

♂ in ♋ gives a person rather obese; pale complexion; light brown hair; rather corpulent; round face; sottish and fond of their own ease and pleasure; lovers of the opposite sex.

Neptune.

The description of persons produced by ♆ is unascertained, as the planet was only discovered in 1846, and as its motion is very slow, it has only travelled about one-fourth of the Zodiac.

The descriptions so far are approximately as follow:—

♆ in *Aries*.—Rather tall, well-formed, with ruddy complexion; eyes usually brown, and long neck.

♆ in ♈.—Medium stature; thick set; pale complexion eyes blue.

♁ in ♀.—Tall, well-made stature ; rather dark.

♁ in ♁.—Tall, thin, pale in complexion, and a long neck.

The disposition produced by ♁ is unsettled, restless, doubtful, inquiring, ambitious, and much inclined to spiritualism and occultism.

NOTE.—*The foregoing descriptions will answer when there is no other planet in the ascendant, or in powerful aspect thereto.*

CHAPTER VII

THE ESSENTIAL AND ACCIDENTAL DIGNITIES OF THE PLANETS.

The Essential Dignities.

THE signs are distributed among the planets in the following order, and are called the planets' *Houses* or *Mansions*.

♄	and	♃	are	the	houses	of	♂.
♅	”	♋	”	”	”	”	♀.
♆	”	♌	”	”	”	”	♁.
♇	”	♍	”	”	”	”	♂.
♈	is	the	house	of	the		♃.
♉	”	”	”	”	”		♄.
♊	”	”	”	”	”		♅.
♋	”	”	”	”	”		♆.

They are called “mansions” or “houses,” because, when the planets are in their respective signs, they are then very powerful, and become Lords of the horoscope, according to the sign that is on the ascendant, or rising at the birth. For instance, should ♄ be rising, then Mars is lord of the figure, or the ruling planet of the native ; the same if ♃ rises. If ♇ be rising, then ♁ is lord, and so on of the others.

The reason for this classification appears to be this:—The *natures* of the signs ♄ and ♃ agree with the nature of ♂ more than with any other planet ; for instance, ♄ is a bold, intrepid, warlike, headstrong, impetuous sign, agreeing with the *nature* of ♂ when *unafflicted* ; ♃ on the other hand

is a malicious, crafty, stubborn, cruel and bloodthirsty sign, very similar to the nature of Mars, when *badly* placed in a nativity, or afflicted. The sign ♄ is similar in nature to ♀ when afflicted, and ♃ when she is strong and unafflicted. ♋ is the "house" of the ♃; this sign is moveable, moist and unstable, and persons born with it rising, especially females, lack firmness; the ♃ is constantly changing her position, for she moves twelve times faster than the Sun, whose house is the regal, firm, steadfast, noble sign, ♌.

There are also some signs in which certain planets are found to be very powerful, though not to the same extent or degree as when in their own "houses." These are called the "exaltations of the planets," and they run thus:—♌ is the exaltation of the Sun; ♄ of the Moon; ♋ of Jupiter; ♊ of Mercury; ♏ of Saturn; ♎ of Herschel; ♍ of Mars; and ♋ of Venus. The signs *opposite* to these are those in which they receive their "fall," being then weak in power, and the signs *opposite* to their respective "houses" are called the "detriments" of the planets. They are then especially weak and unfortunate. For instance, ♄ and ♏ are the detriments of ♃, being in opposition to ♌ and ♊, which are the "houses" of ♃.

The following table will show this at a glance:—

Sign.	Planet's House.	Exaltation approximate degrees.	Fall.	Detriment.
♌	♃	♌ 19°	♏	♏
♍	♄	♍ 3°	♌	♌
♎	♃	♎ 15°	♍	♍
♏	♄	♏ 15°	♎	♎
♐	♃	♐ 21°	♏	♏
♑	♄	♑	♐	♐
♒	♃	♒ 28°	♑	♑
♓	♄	♓ 27°	♒	♒

Handwritten notes on the left margin of the table, including symbols like ♀, ♃, ♄, ♅, ♆, ♇, ♈, ♉, ♊, ♋, ♌, ♍, ♎, ♏, ♐, ♑, ♒, ♓.

There are other signs, also, in which the planets are powerful but only to a small extent, and these are the signs which agree with the planet in *nature*. For instance, ♀ joys in ♀, ♁, ♃, and ♄, being signs of a scientific nature, and most allied to its own nature; ♀ in fruitful, moist signs, as ♋ and ♌; ☉ and ♂ in hot, fiery signs, as ♈, ♎ or ♏; ♃ in fruitful, temperate signs, and especially in ♋ and ♌, and also in ♁ and ♃. ♁ delights in ♁ and ♃, and ♃ in ♁ and ♃. The ♃ is the same as ♀.

I advise the student not to notice any other dignities of the planets that he may have heard or read of, such as "Triplicity," "Term," and "Face"; for I have not discovered that these have any signification, especially in Genethliacal Astrology, so I omit them. No signs or dignities have as yet been assigned to ♃.

The Accidental Dignities.

These consist of a planet being well placed in the figure of the Heavens, with respect to being in the angles or other houses. The most powerful *accidental* dignities are the 1st and 10th houses, next the 7th, then the 11th and 4th, and the only *evil* house appears to be the 6th, for any planet therein very seldom benefits the native, it is more often the other way. Some planets "joy" more in one house than another, for instance, the ☉, ♃, ♃, and ♂ in the 10th, but ♁ and ♀ prefer the 1st; the 3rd is also favourable for the latter planet; ♀ delights in the 7th, and ♃ in the 9th.

CHAPTER VIII.

THE USE OF AN EPHEMERIS.

AN Ephemeris is an account of the Geocentric places of the planets, and contains their Longitudes, Latitudes, and Declinations. It is *absolutely necessary* in all Astrological

computations, and cannot be dispensed with. They are issued for every year from 1800. The student should obtain one for the year in which he wishes to erect the map; if born in 1840, he should obtain an Ephemeris for that year; the same with any other year. The price is 1s. per year

At the top of my Ephemeris, you will find the Latitude and Declination of ψ , H , h , V , ♂ , ♀ , and ♃ , and also the Moon's Node, and the "Mutual Aspects." With the *Latitudes* of the planets, and the *Moon's Node*, you need not concern yourself, for you will not require them for any calculations taught in this book. The "Mutual" aspects are thus called, because they are formed between the planets, and in contradistinction to the "Lunar" ones, or those formed exclusively by the D , which you will find at the right-hand side of the lower part of the page. The *Declinations* you will require in calculations.

In the bottom segment of the page there is a column marked "Sidereal Time," this you may use in setting a Map of the heavens for any time by *adding* or *subtracting* the "time from Noon," as taught elsewhere.

The second large column is the \odot 's Longitude, also to be used to ascertain the position of the \odot in the map, for this column shows the sign, degrees and minutes the \odot occupies each day; the next column is the \odot 's Declin., then the D 's Longitude, noon and midnight, also her Latitude and Declination for the same; her Latitude will not be wanted, and if you work by *Logarithms* as taught, it will be best to use the columns for *noon* only, and leave those for midnight alone.

On the right-hand page the Longitudes of the planets will be found, which show the sign, degree, and minute each planet occupies for every day of the month. These, of course, you will require, in order that you may know in what part of your map to place the planets.

CHAPTER IX

HOW TO ERECT A MAP OF THE HEAVENS

You must first ascertain what time it is you are using. Whether Greenwich time or local time. If local, you must take the time just as it is, and work with it without any alteration or additions of any kind, but if Greenwich time, you must ascertain the difference in time between the place for which you set the map, and Greenwich, because everything in the Ephemeris is calculated for Greenwich. The difference in time East or West of Greenwich is 4 minutes for every degree of Longitude. Suppose, for instance, you want to set a map for Newport, Mon. This is 3° West Longitude, or 12 minutes later than Greenwich. Therefore if Greenwich time is used at Newport, you must subtract 12m. from the time to make it local time, for when it is noon at Greenwich, it will be about 11h. 48m. at Newport. Again, suppose the map is for Galway, in Ireland, which is 9° West Long. or 36m. later than Greenwich, you must subtract 36m. from the Greenwich time, to make it local time, but if the time used is local time, of course you will make no alteration. Great Yarmouth and Lowestoft are about $1^{\circ} 30'$ earlier than Greenwich, consequently you must add 6m. to Greenwich time to make it local time, that is, provided the time used is Greenwich time. There is also a little correction to make for the increase in the Sidereal time. It is at the rate of 10 secs. per hour, or two minutes for 12 hours. It is very trifling and the young student need not bother with it at first.

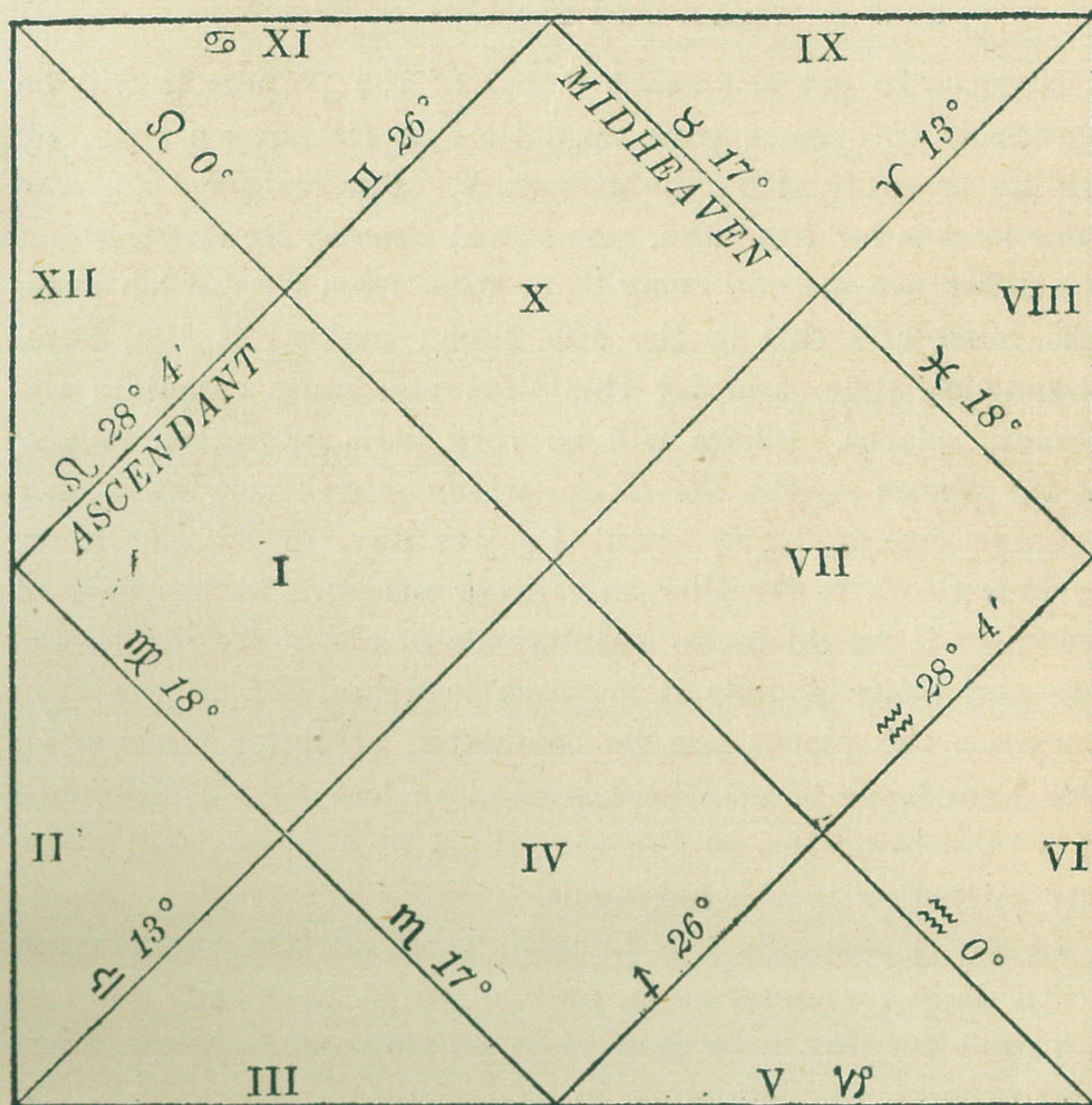
Having ascertained the local time for which to set the map, you must first look in my Ephemeris for the "Sidereal Time"

on the day, month, and year required; then, if the birth be *before* noon, *deduct* from the Sidereal time the difference between the time of birth and noon of the same day; but, if the birth happened *after* noon, then *add* the difference between noon and the time required to the Sidereal time at noon. If the Sidereal time be small, so that the deduction cannot be made, add twenty-four hours to it, then make the deduction, and work with the difference; also, if in adding the time to the Sidereal time, the total *exceeds* 24 hours, deduct 24 hours, and work with the remainder. For instance, say the time required for the map was December 1st, 1906, 10.20 p.m. Look in the Ephemeris for 1906, and in the column marked "Sidereal Time," and on the 1st day of December, you will find it to be 16h. 37m. 44s. Now, as the time is *after* noon, you add to this Sidereal time the 10.20 p.m., which makes it 26h. 57m. 44s., and, as the total exceeds 24h. you must deduct that amount, and it will leave 2h. 57m. 44s., which is the Sidereal time, or Right Ascension of the Meridian at 10.20 p.m. on the 1st of December, 1906. If the time required had been 10.20 a.m. instead of p.m., you would have had to deduct from the Sidereal time 1h. 40m., as 1h. 40m. is the difference in time between 10.20 a.m. and *noon*. Thus, Sidereal time is 16h. 37m. 44s., deduct 1h. 40m., and it leaves 14h. 57m. 44s., which is the Right Ascension of the Meridian at 10.20 a.m. on the 1st December, 1906.

At the end of my Ephemeris for nearly every year since 1884 you will find "Tables of Houses" for London, Liverpool, and New York; use those tables which are nearest the *Latitude* in which you were born. Now, we found that the Sidereal time or Right Ascension of the Meridian at 10.20 p.m., on December 1st, 1906, was 2h. 57m. 44s., therefore you must turn to the Tables of Houses, and in the column marked 'Sidereal Time,' find this amount or the *nearest* thereto; if you take the Tables for London, you will find the nearest is 2h. 58m. 7s. In the next small column to this, to the right, we find 17° and at the top 10 8, the 10 means the 10th house,

and 8 shows that that sign is then passing over the cusp or beginning of that house, and the 17° is the degree which is actually on the cusp at 10.20 p.m., consequently we place 8 17 on the cusp of the 10th house. In the next small column we find 26° and at the top 11 Π ; the 11 signifies the 11th house, and Π shows that that sign is then passing the cusp of the 11th house, therefore, we place Π 26° on the cusp of that house. In the next column we find Ω , and on the top 12 \ominus , which means the 12th house, and that \ominus has been on the cusp, but if you look slowly down the column you will find \ominus passes over, and Ω begins before the time we want, hence you must place Ω 0° on the cusp of the 12th house. In the next column you will find $28^{\circ} 4'$ and at the top "Ascen. Ω ," the "Ascen." means *ascendant* or the 1st house, so you place them on the cusp of the 1st house, thus: $28^{\circ} \Omega 4'$. In the next column you will find 18° and at the top 2 Υ ; the 2 signifies the 2nd house, and that Υ is the sign on its cusp. You, therefore, place Υ 18° on the cusp of the 2nd house. In the next column we find 13 and at the top 3 Υ ; the 3 denotes the 3rd house, but by looking down the column you will find that Υ runs out, and \cap begins, hence you place \cap 13° on the cusp of the 3rd house. You have now got the signs and degrees on the cusps of six houses, and on the other cusps you must place the same degrees, but *opposite* signs, thus:—On the cusp of the 4th we put \mathcal{M} 17° , for \mathcal{M} is opposite to 8, and the 4th house is opposite the 10th; on the 5th we put \ddagger 26° , for \ddagger is opposite to Π ; on the 6th we put \approx 0° , for \approx is opposite to Ω ; on the 7th we put $28^{\circ} \approx 4'$ for the same reason; on the 8th, \times 18° and on the 9th γ 13° , because \times and γ are opposite to Υ and \cap . You have now the signs and degrees on all the *cusps* of the *houses*, but if you run over the signs in rotation, beginning with γ , 8, &c., you will find no \ominus , this sign is what we call "intercepted," that is, *between the cusps* of two houses, and as \ominus follows Π , it must be placed in the middle of the 11th house; if you proceed with the counting, you will find no \wp , now \wp is opposite to

☉, hence it must be placed in the middle of the 5th house. See the following diagram:—



No. 2.

It often happens that two signs, and sometimes even four, are "intercepted," so that the student should always look them over, to make sure they are all there. This "interception" is caused by the *Latitude* of the Country. At the Equator all the signs rise in regular rotation, but as one proceeds N. or S. an inequality in their rising occurs.

NOTE.—*Tables of Houses are the same from year to year. They do not change.*

CHAPTER X.

HOW TO PLACE THE PLANETS IN THE MAP.

NOTE.—To get the exact places of the planets it will be necessary to correct your local time to Greenwich time, by adding or subtracting the difference. For instance, suppose your map is for 10h. 20m. p.m., local time at Newport, Mon., the difference in time being 3° or 12m. from Greenwich time, you must add this to the 10h. 20m., making it 10h. 32m. Greenwich time, and for this time you must calculate the planets' places. There will be very little alteration in any of the places except the moon, which moves very swift, her average motion being about 13° per day, or $32'$ per hour, or four times faster than any other planet. In the case of Newport it would make a difference of about $6'$. With the sun and other planets it is much less, and for all practical purposes the places can be calculated as if for Greenwich. Our knowledge of astrology is not so exact that a difference of a minute or two in the Longitude of a planet will make any alteration in the judgment.

In my Ephemeris the Longitudes of all the planets are given daily for mean noon, and to get at the exact place of a planet for any hour is a very simple matter. You must first observe the difference in Longitude on the noon of the day of birth, to the noon of the day nearest thereto. For instance: if the time be A.M., the difference between the previous noon and the noon of the day for which the figure is set must be taken; but if the time be P.M., use the difference between the present noon and the noon of the day after. For example: Our diagram is set for December 1st, 1906, 10.20 p.m., and referring to the Ephemeris for that month (page 24), we find in the column marked " \odot Long." that on the 1st day it was $8^{\circ} \uparrow 23' 51''$, and on the 2nd day $9^{\circ} 24' 41''$, now, the difference is $1^{\circ} 0' 50''$, which we may call $1^{\circ} 1'$, for $50''$ is nearly $1'$. This $1^{\circ} 1'$ is the motion of

the ☉ in 24 hours or from noon of the 1st to noon of the 2nd. (The daily motion of most of the planets is given on pages 26-27 and 28 of the Ephemeris).

At the end of my Ephemeris you will find a "Table of Proportional Logarithms," and a rule and example at the bottom. In the present case we proceed thus:—

Proportional Logarithm of ☉'s daily motion, 1° 1',	= 1.3730	
,, ,, 10h. 20m.	.3660	
		Total 1.7390

We find the nearest number to this in the table, to be 1.7434, and at the top of that column 0, and to the left of the figures 26', which shows that the ☉ moves 0° 26' in 10h. 20m., and, as the time is P.M., we add it to his Longitude at noon on the 1st December, which will make it 8° † 49' 51", or say 8° † 50' (where seconds are under 30, reject them—if over 30, call them 1'). We therefore place the ☉ in the 4th house in the map.

With the ♃ we proceed exactly the same, thus:—

Longitude of ♃ on 2nd	= 26° II 3' 27"	
,, ,, 1st	= 14 13 28	

Motion of ♃ in 24 hours = 11° 49' 59" or 11° 50'

Proportional Logarithm of 11° 50'	= .3071	
,, ,, 10h. 20m.	= .3660	
		.6731

The nearest we can find is .6726, and at the top of column 5, and at the side 6', which shows that the moon moves 5° 6' in 10h. 20m., and we add this to the ♃'s Longitude at noon, thus:—

Longitude of ♃	14° II 13'	
Motion of ♃ in 10h. 20m.	5 6	
		19° II 19'

Therefore we place the ♃ in II in the 10th house.

We find the Longitude of ψ on page 25 of Ephemeris to be $12^{\circ} \text{♁} 6'$, on the 1st, and $12^{\circ} 5'$ on the 2nd; hence he moves but $1'$ in the 24 hours. So we place him in $\text{♁} 12^{\circ} 6'$ in the 11th house, and put R after it, to show that it is Retrograde, or "going back" in Longitude. The next planet is ♃ , he moves $4'$ in the 24 hours, so we add $2'$ to his longitude, and put him in the 5th house, in $\text{♃} 6^{\circ} 55'$. The next is ♂ , and he moves $2'$ in the 24 hours, so we add $1'$ to his Longitude, and place him in the 7th house, in $\text{♂} 8^{\circ} 38'$. The next is ♄ , and he moves $7'$ retrograde, so we subtract $3'$ from his Longitude, and place him in the 11th house, in $\text{♄} 9^{\circ} 19' \text{R}$ near ψ . ♁ comes next, and, subtracting his Longitude on the 1st from that of the 2nd, we find he moves $37'$ in the 24 hours.

Proportional Logarithm of $37'$	=	1.5902
" " 10h. 20m.	=	.3660
		1.9562

The nearest Logarithm is 1.9542, which is equivalent to $16'$, so we add $16'$ to ♁ Longitude, which makes it $\text{♁} 20^{\circ} 24'$, and place him in the 3rd house. The next planet is ♁ which is seen to be retrograding, and her motion between the 1st and 2nd is $36'$ therefore:—

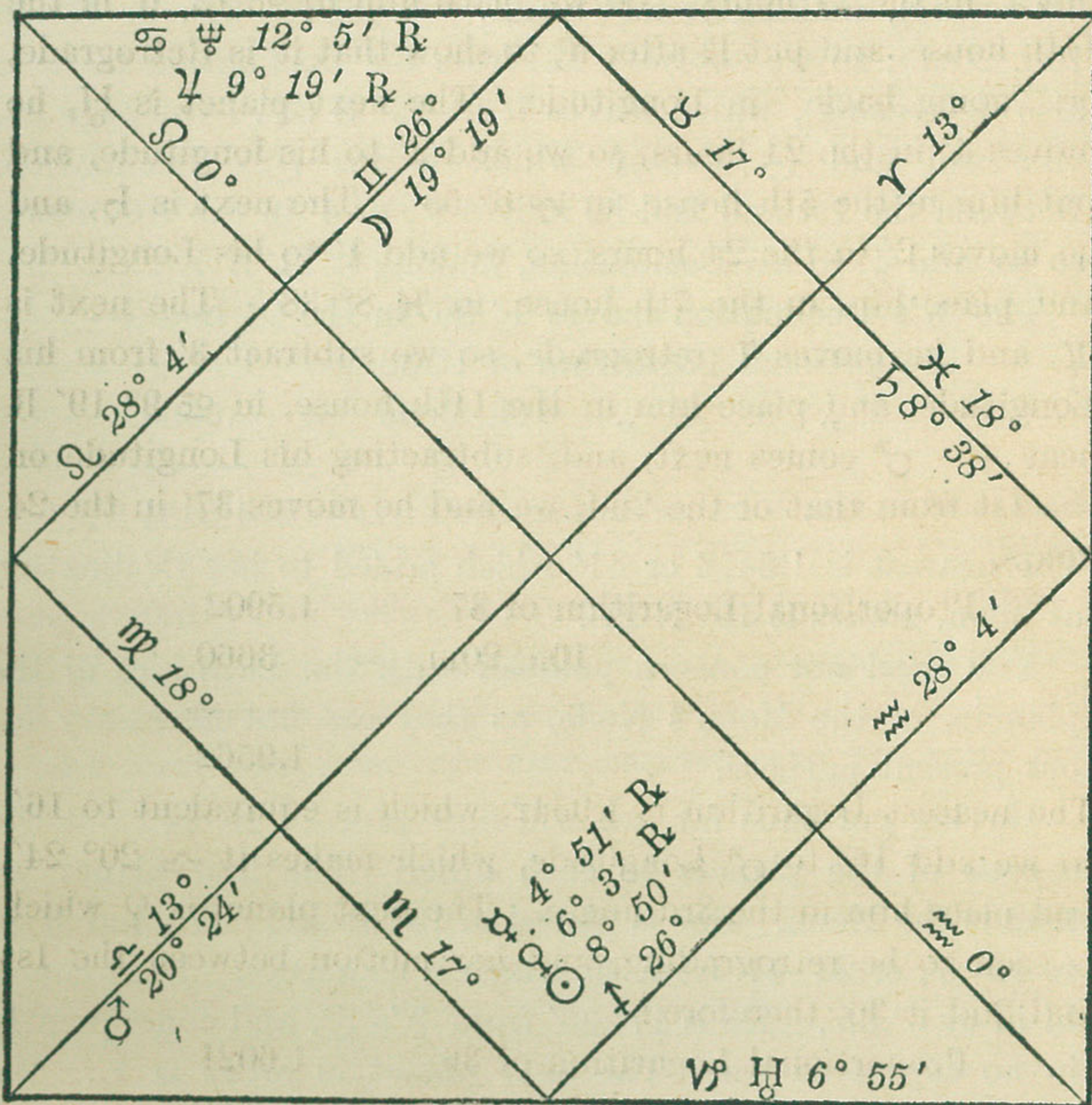
Proportional Logarithm of $36'$	=	1.6021
" " 10h. 20m.	=	.3660
		1.9681

The nearest to this is 1.9542 or $16'$, we therefore subtract $16'$ from the Longitude of ♁ , which makes it $\text{♁} 6^{\circ} 3'$, and we place her in the 4th house, near the ♁ . The last planet is ♁ , who is also retrograde, and moves $1^{\circ} 17'$ in the 24 hours.

Proportional Logarithm of $1^{\circ} 17'$	=	1.2719
" " 10h. 20m.	=	.3660
		1.6379

The nearest is 1.6398, or $0^{\circ} 33'$. Subtract this from the

Longitude of ♃, which makes it ♄ 4° 51', and we place him beside ♀, in the 4th house: see the following diagram:—



We have now found the Longitudes of all the planets. The next point is to find their Declinations. The Declination of ♄ for the 1st day is seen to be 22° N 0', and on the 3rd the same, so we do not alter it. ♃ moves only 1' in the 2 days, so we leave his Declination at 23° S 35'. ♄ moves 2', and we also leave his Declination at 10° S 10'. Same as regards ♃, who moves but 1'; Declination—22° N 58'.

Observe that the Declinations of ♃, ♄ and ♃, are given for noon *each* day. ♃ moves 14', and for 10h. 20m. the motion will be 6', making the Declination of ♃ 6° S 53'. ♄ moves 22', and, by using the Table of Proportional Loga-

rithms as already shown, we find that she moves 9' in the 10h. 20m., so we *subtract* 9' from her Declination (as it is *decreasing*), making it 22° S 17'. ♃ moves 31', or 13' in 10h. 20m.; so we subtract 13' from his Declination (as it is also decreasing), which leaves it at 19° S 33'. On page 24, you will find ☉ Declin. which means ☉'s Declination. Between the 1st and 2nd he moves 9', or 4' in the 10h. 20m., so we add 4' to his Declination, making it 21' S 47'.

The ♃'s Declination moves 1° 36' in the 24 hours—

Proportional Logarithm of 1° 36 = 1.1761

„ „ 10h. 20m. = .3660

—————
1.5421

The nearest is 1.5456 or 41' which added to her Declination at noon, makes it 19° N 21'.

You need not concern yourself with the Latitudes of the planets, or the Moon's Node, as they are not necessary for our present purpose.

Having got thus far, we will now proceed to find out the *aspects* of the planets to each other. The first planet we take is the Moon. She is placed in 19° ♀ 19'. We find ☿ in ☉ 12° 6', or 22° 47' from ♃, which is no aspect. Next comes ♃ in ♃ 6° 55'. He is 17° 36' from ♃'s ♀, and consequently in no aspect to her. The next planet in order is ♃. We find him in ♃ 8° 38'. From ♃ 8° to ♀ 19' is 101°, which is no aspect, so we pass it over. The next is ♃ in ☉ 9° 19', or 20° from ♃, this is no aspect. The next planet is ♂ in ♃ 20° 24'. Now from ♀ 19° to ♃ 19° is 4 signs or 120° or a △ aspect, as ♂ is within 1° of it; hence we find ♃ △ ♂, and place it beneath the map accordingly. The ☉ is next in ♃ 8° 50'. This is ♀ to the ♃ or 6 signs apart, so we put it down ♃ ♀ ☉. ♀ and ♃ are both out of orbs of the ♃'s ♀. Now, having finished the ♃, we take ♃, who is seen to be quite near ☉ and ♀, and therefore in ♂ with them, so we put it down ☉ ♂ ♃, ♃ ♂ ♀. He is 44° 27' from ♂, which is a sign and a half, 45° or ∠. ♃ and ♃ are 4 signs and 25°

32' apart, or 145° 32', which shows they are in ±, or 144°, a very weak aspect. ♄ comes next, and we find him in close □ to ♃, or 3 signs apart. ♃ and ♄ are in ♄, being 32° 4' apart. ♃ is in ± with ♅, as we found he was with ♆. You will now proceed in the same manner with the other planets, taking each in rotation, when you will find the following aspects:—

♃ ♁ ☉. ♃ △ ♂. ♃ ♂ ♀. ♃ ∠ ♂. ♃ ± ♆. ♃ □
 ♄. ♃ ♄ ♄. ♃ ± ♅. ♀ ∠ ♂. ♀ ± ♆. ♀ □ ♄.
 ♀ ♄ ♄. ♀ ± ♅. ☉ ♂ ♃. ☉ ♂ ♀. ☉ ∠ ♂. ☉ □
 ♄. ☉ ♄ ♄. ♂ □ ♄. ♆ △ ♄. ♆ ♂ ♄. ♆ ♂ ♅.
 ♄ * ♄. ♄ △ ♅. ♄ ♂ ♅.

We now look at the Declinations to see if any of the planets are in Parallel. We find ☉ in nearly the same Declination as ♀ and ♅, so we write down ☉ P ♀, ☉ P ♅. Then ♃ P ♃ is almost exact. Again ♆'s Declination differs less than 1° from that of ♄ and ♅, so we say ♆ P ♄. ♆ P ♅. We have now completed the map entirely, and the next point is to *judge* it.



PART SECOND.

CHAPTER I.

OF THE POSITIONS OF THE PLANETS AND THE SIGNIFICATIONS
OF THE PLANETARY ASPECTS IN A NATIVITY.

♅ Herschel or Uranus.

♅ IN the ascendant, in *fiery* signs, makes the native rash, headstrong, impetuous, and ambitious; fond of curiosities; restless; inclined to the study of astrology; aiming at great and noble things, possessing original talents; fond of dispute and argument. In the *earthy* signs, the native is stubborn, headstrong, and malicious, with large animal propensities; treacherous, gluttonous, and conceited. In the *airy* signs—subtle, learned, penetrating, and original in ideas; fond of all sciences, especially such as relate to occult matters; truthful, opinionative, and rather proud. In the *watery* signs—given to drink, and to low company and cunning practices; lewd, shallow-minded, stubborn, and malicious; void of fine feelings, blunt and ill-mannered; subtle and crafty for his own ends. Generally, the nature of Herschel may be said to be, when in the ascendant at birth, wayward, stubborn, conceited, possessing some original talent, talkative, proud, malicious, and jealous. The native is abrupt in manners, changeable in mind and temper, difficult to please, impulsive, precipitate, and very independent. The mind appears to be made up of contrarities, and he acts more from impulse than from reason, and is always ready to quarrel with his best friend; such persons are often estranged from their kindred, and lead a roaming, unsettled life.

♁ *in the 2nd.*—Sudden gains and sudden losses; much difficulty and perplexity in money matters; often subject to heavy losses, and those generally unexpected.

♁ *in the 3rd.*—Fond of science and astrology; given to occult studies, to the purchase of curious books; it denotes many changes of residence and unsettledness of purpose. Fond of travelling; independent in manners; trouble through letters and writings and from brethren and neighbours.

♁ *in the 4th.*—Estranged from parents; trouble with any money or property the native may expect; bothers and perplexities and often poverty in old age, which will depend on the strength or weakness of the planet. If strong, the old age will be much more favourable and pleasant than if weak.

♁ *in the 5th.*—Denies offspring, or they are short-lived, or die in some extraordinary manner; much trouble from children; loss in betting and speculation; too much given to pleasure, or gaming. A very unfortunate position for females, threatening disgrace at an early age, especially if ♄ or ♀ be rising.

♁ *in the 6th.*—Troubles from servants, labourers, and inferiors, who are not to be trusted; the native should also be careful of diphtheria if ♁ be in ♄ in the 6th. It often produces strange sickness which baffles the skill of medical men.

♁ *in the 7th.*—Very evil; threatens a most unhappy marriage, and often separation; the wife or husband will be cruel, violent, or adulterous; it is nearly, if not quite, the worst position possible for marital or conjugal happiness; very bad for law and disputes, also partnerships, all of which the native should studiously and strenuously avoid, particularly if ♁ should be afflicted by aspect or position; it also shows opposition to the native's success by powerful adversaries. It is a bad position for business, threatening loss. The native gets the bad end of every bargain.

♁ *in the 8th.*—Wife or husband poor and squanders money; difficulty with any legacy, and probably loss of the same;

*in the
and ♄ ♀*

much annoyance and excitement about the goods of the dead. If much afflicted it threatens suicide.

♃ *in the 9th.*—Fond of occult sciences and astrology, literature and arts and sciences generally; given to travelling, and curious in religious beliefs; independent, firm, headstrong, wayward, and stubborn; often suffers seriously from relatives by marriage.

♃ *in the 10th.*—Credit and discredit alternately; disputes with superiors; often changing employment or profession, and travelling about; scandal, estranged from relatives; independent and bigoted.

♃ *in the 11th.*—Friends ready to help and to want help; acquaintances not creditable to the native, and the fewer he encourages the better for him, as he is liable to eventual loss and trouble through them.

♃ *in the 12th.*—Many secret and private enemies; jealous, crafty, subtle fellows, delighting in the native's downfall. Their description can be seen by referring to the sign ♃ occupies. If afflicted by ♂ in this house, let the native beware of robbers and burglars, and personal hurt thereby.

NOTE.—*Special regard must be paid to the strength or weakness of this planet. A strong and powerful planet helps the native, but when weak either by sign or aspect, much trouble will occur. For instance, ♃ in ♌ or ♍ will produce very different effects to ♃ in ♄ or ♅ or even ♆.*

THE CONJUNCTIONS AND ASPECTS OF HERSCHEL.

♃ *in ♄, or bad aspect with ♃.*—These are not important, except in the 1st, 2nd, 7th, or 10th houses. In the 1st they make the mind crafty, subtle, malicious, murderous, and revengeful. In the 2nd, loss of wealth and perpetual poverty. In the 3rd, great fondness for astrology and occult studies, and damage from brethren. In the 4th, poverty and distress at the end of life, unless they be in ♌, ♍, or ♎. when the end may be expected to be miserly and wretched. In the 5th, death of children. In the 6th, heavy and prolonged

affliction, dishonest servants. In the 7th, lawsuits, losses, bankruptcy, and a most unfortunate marriage. In the 8th, no gain or benefit by the marriage partner. In the 9th, fondness for the occult sciences and a powerful mind. No religious convictions. Damage from relatives by marriage. In the 10th, great discredit, disgrace and probably ruin and imprisonment. In the 11th, ruin through friends. In the 12th, robbery and a host of secret foes, full of envy and jealousy.

♁ in good aspect to ♃.—Not important in any way. I have observed that the aspects of ♁ and ♃, especially the □ and ☿, conduce to clairvoyance and lucidity of vision.

♁ in ☿ or good aspect with ♃.—Benefit by legacy, especially if ♁ or ♃ be in the 2nd or 8th house and strong; and success in business, and fond of religious occupations, and offices of distinction.

♁ in evil aspect to ♃.—Loss by litigation; difficulty with property or inheritance, or any property the wife or husband may possess; it is not good for business or success, threatening sudden and heavy losses. Clergymen frequently turn Ritualists and incur the displeasure of their superiors. Speculation should be strictly avoided.

♁ in ☿ or evil aspect with ♂.—Very malicious, blood-thirsty, and daring; given to thieving and robbing, and liable to imprisonment. This must only be considered when either or both are in the ascendant, 3rd, 9th, 10th, or 12th houses. It is very bad for marriage if it happens in the 7th house, separation will ensue and perhaps injury or murder. It is also bad for lawsuits and partnerships, and also unfortunate for the military profession.

♁ in good aspect to ♂.—Bold and self-confident; headstrong, and violent; generous, brave; makes a good soldier or surgeon, gaining reputation thereby. Consider this chiefly if ♂ or ♁ be strong either by house or sign.

♁ in ☿ or ♀ with the ☉.—This happening in the ascendant makes the native brave, bold, sincere, and respected. In

the 2nd house, or midheaven, gives him great success at certain periods, followed by the most crushing misfortune; a life full of strange vicissitudes. In a female natus it is very evil, and such persons not unfrequently cohabit with men unmarried, or leave their husbands and elope. The ☉ in any aspect to ♀ in a feminine natus is evil, and especially so are the ☐ and ♄.

♂ in evil aspect with the ☉.—Many bothers, discredit and loss through powerful enemies, public companies, or railways. His affairs go wrong nearly all through life; and losses and disappointments threaten him. If ♀ or ☉ be in the 1st, 2nd, or 10th, so much the worse. With a female it is similar to the ♄.

♂ in good aspect to the ☉.—Benefit from strangers and elderly persons; success in any employment, more especially public or governmental. Many of the government officials have the ☉ befriended by ♀ at birth. With females it excites to strong attachments, and, frequently, to a *very* early marriage, or an immoral love intrigue, particularly if the ☽ is afflicted by ♀ or ♄.

♂ in ♄ or P with ♀.—This happening in the 1st, 3rd, or 9th, the native is generally a good musician or actor, excelling in the fine arts, but very fond of women and pleasure. When it happens out of the ascendant, the native will be harassed in courtship, and form an illicit acquaintance after marriage. In the 7th house, the wife may do the same. In the M. C. it shows success by and through powerful females.

♂ in evil aspect with ♀.—Trouble in "love" affairs, prone to jealousy, disliked by females generally; the native wastes his substance over worthless women. This especially will be the case if either ♀ or ♀ be in the 1st, 2nd, 5th, 7th, or 10th house.

♂ in good aspect to ♀.—Success with the opposite sex, by whom he is much beloved; skilful in music and singing, and very refined if ♀ or ♀ be dignified by position or sign.

♂ in ♄ or P with ♀.—This happening in the ascendant

like strong

makes the native a great scholar, excelling in art and literature, gaining fame and reputation thereby; in the 3rd or 9th, fond of astrology and the occult studies; eccentric in behaviour, original in taste and ideas, yet at some period in life severely criticised by the public. If this happens in ♃, the native will be all talk and conceit, and fond of drink. The quality of the sign occupied must be considered. Not much good can be expected if they occupy ♄ or ♃, as the native will be given to drink.

♃ in evil aspect with ♃.—This produces a nasty, bitter, sarcastic turn of mind, very fond of finding fault with others. Ill success in publishing literature, however good it may be, and severely criticised by the press and public. It is a bad aspect for public favour.

♃ in good aspect to ♃.—Success in literature; a pregnant, studious mind; original in ideas; fond of curiosities and things out of the common track. This especially will be the case if ♃ or ♃ be in the 1st, 3rd, or 9th house, and occupy a scientific sign, such as ♄, ♃, ♄, or ♃.

♃ in ♀ or evil aspect with ♃.—This has chief rule over the native in his married life, and with respect to his wife, acting the same with him as the ☉ and ♃ do in a female natus. He is not unfrequently led astray after marriage, and unless careful, separation follows. He is given to travelling, and frequent changes of residence. In the case of a female, it frequently shows the husband to be unfaithful and fond of the society of married women.

♃ in good aspect to ♃.—This leads to illicit connections after marriage, but not often to separation. If the ♃ or ♃ be in power, i.e., in 1st, or 10th or even 3rd or 9th, he will travel much, and never remain long in one place.

NOTE.—*The young student cannot pay too much attention to the position of every planet, whether it is strong or weak. A strong planet rarely afflicts the native, but benefits him, whether the planet be a malefic or benefic. On the contrary a malefic planet, weak, afflicted or afflicting other planets by bad aspect,*

will be a constant source of trouble to him, the exact nature of which may be learned from the house the afflicting planet occupies. Again, a benefic planet weak, or afflicted by bad aspect, cannot produce much good, for it shows that the native's friends or those who would help him, are not in a position to do so; even their advice will turn out unfavourable. Never rely on a weak or afflicted planet for any benefit in any way, because it cannot produce it. These remarks apply to all the planets, and in every case.

CHAPTER II.

Saturn.

THIS planet in the ascendant at birth makes the native timid, cautious, mistrustful, and fearful; reserved, thoughtful, malicious, and revengeful; covetous and envious. In the *fiery* signs his nature is improved; he is more free, straight, and honest in his actions, but rash and impetuous, fond of argument and quarrelling. In the *earthy* signs, especially ♄, the native is sottish, dull, heavy, and malicious; in ♁ very inquisitive, suspicious and fretful; in ♃, argumentative, crafty, selfish, hard-working, and miserly. In the *airy* signs, thoughtful, studious, contemplative, close over money matters and his own affairs, sincere and devout in religion, so far as it concerns "self." ♅ and ♆ are better signs than ♁, for in the latter he is simply a nuisance to every one on account of his opinionative, selfish, miserly, and proud ways. In ♄ or ♁ especially, he is dull, sottish, and dejected, depraved and obscene; sometimes an enthusiast in religion; in ♁ very crafty and malicious and not to be trusted. *Generally* the native of Saturn is shy, and has aversion to society; contemplative, stubborn and morose; deceitful, crafty, and subtle for his own ends; miserly, fond of his habitation; constant, curious in religious beliefs, fanciful and bigoted, frequently an impediment in the speech (except ♃ be in the

airy signs), careful of his affairs and family, austere and averse to changes. Much, however, will depend on how this planet is aspected, which will be explained presently.

♁ in the 2nd.—Much trouble and worry in money matters; loss of money; ill success in trade or business; the native has usually to work *very hard* for his money, even when ♁ is essentially fortified; when out of dignities, distress and poverty usually dog the native's footsteps, more or less, through life. The sign occupied, and the aspects he receives, must not be lost sight of.

♁ in the 3rd.—Danger and loss in travelling; journeys unpleasant; quarrels with or losses through, neighbours or brethren; contemplative; fond of astrology and uncommon subjects and occult sciences; serious and thoughtful, steadfast and persevering.

(low) ♁ in the 4th.—Illness or early death of the father; and a miserable and poverty-stricken end to the existence; if ♁ be strong, as in ♈ , ♁ , or ♂ judge the contrary, and that the native will acquire land or property and have a peaceful end to his existence; he will be a dear lover of gold, even to the grave.

♁ in the 5th.—In ♁ , ♁ , ♈ , or ♁ denies offspring; in other signs, destroys them, or causes them to be a continual source of trouble and unhappiness to their parents, drunkards, reaching an untimely grave; bad success in gaming or speculation, and sports of any kind, and injury thereby.

♁ in the 6th.—This is an unfortunate position, as unless ♁ be well *aspected*, it causes sad and heavy sicknesses. In the *fixed* signs, danger of heart disease, gravel or stone, diphtheria and throat affections, bronchitis; in the *common* signs, consumption, asthma, cancer, bad legs, bowel and kidney complaints; in the *cardinal* signs, pains in the chest and weak stomach, rheumatism, and in ♈ , great derangement of the liver; bad servants and losses through them are also denoted.

♁ in the 7th.—Cold, reserved, melancholy, morose, wife or husband, and if in a *common* sign, death of the partner,

and a second or even third marriage; if ♃ be essentially strong, money or property in marriage, and marriage with a widow or a widower, as the case may be. It is an unfortunate position for chastity. It is seldom the marriage turns out happy. It also shows many deceitful, open enemies. This position is also very bad for partnerships, lawsuits, and in dealing with others.

♃ in the 8th.—No portion with the marriage partner except ♃ be strong; trouble and annoyance with any legacy or property the native may expect.

♃ in the 9th.—Firm and steadfast in religion; headstrong, thoughtful, reserved, and contemplative; studious; fond of astrology, occultism, and things out of the common track, magic, &c., danger in travelling by water; loss through relations by marriage. The native should avoid foreign lands unless ♃ be very strong by position or aspect.

♃ in the 10th.—Success in life, with an ultimate fall to disgrace and trouble; frequent discredit in business; trouble to the mother and loss of substance.

♃ in the 11th.—False, deceitful friends, and heavy losses through them, probably ruin; the native who has this position should never lend money, stand security, or become surety for any one; this position also threatens trouble to, or from, offspring.

♃ in the 12th.—Private and deceitful enemies, who try to secretly injure the native, and often succeed; liability to false accusations or even imprisonment; danger of secret poison.

NOTE.—*Special attention must be paid to the strength or otherwise of this planet. When strong, its good effects will be augmented, but if weak, the evil effects will be much increased.*

THE CONJUNCTIONS AND ASPECTS OF SATURN.

♄ in ♈, ♀, or good aspect with ♃.—Wealth or property by legacy, or by marriage if ♃ be lord of the 7th house; in the

⁴2nd, shows gain and success in business; in the 9th, an excellent divine; in the ^h10th, credit and esteem and high honour. These aspects generally lead to the acquisition of wealth, as they render the native careful; he will also hold important offices.

♃ afflicted by ♃.—Loss of money or property by law, or through trustees; the native often enters speculation, and loses heavy sums of money; squanders his estate; and if ♃ or ♃ be lord of 7th, the native is generally anxious to marry a moneyed partner, but rarely succeeds; enthusiastic in religion; often unfortunate in business. It threatens loss of offspring; the native rarely becomes rich.

♃ in ☿ or evil aspect to ♂.—A nasty, bitter temper; malicious and murderous, liable to imprisonment, dishonest and crafty; consider this principally when in the 1st, 3rd, 9th, or 10th. The native is liable to hurts and injuries, or broken bones; falls, especially if either planet be oriental. The signs these planets occupy will show the part, or organ of the body likely to suffer.

♃ in good aspect to ♂.—Courage and boldness; makes an excellent soldier or butcher, with strong nerves and plenty of confidence; steady and persevering. Consider this principally when in the aforesaid houses.

♃ in ☿ or evil aspect with the ☉.—This has great effect on the health, especially if ☉ or ♃ be occidental; in the common signs, the native is liable to colds and consumption, and will have a weak chest and lungs; in ♄ or ♅ danger of asthma; in the fixed signs, falls and accidents, danger of drowning or suffocation, and diseases of the heart and urinary organs; in the cardinal signs, discredit and losses in business, but generally it has more effect on the health. With females, it either denies marriage or delays it very much, according to the nature of the sign in which the aspect occurs; in ♄, ♃, or ♁, it denotes marriage to a lazy, sottish person, and misery and poverty therefrom; it also shows the death of the husband, and a second or even third marriage, and generally to elderly

persons or widowers. These marriages are rarely happy ones, the husband being very exacting, domineering, cruel, and selfish, taking delight in ill-using others.

h_2 in good aspect with the \odot .—Steady, persevering, and generally sober; gain and success in life and by great and powerful persons, and the holding of lucrative or governmental offices. With females it leads to marriage late in life, or with elderly persons, and if h_2 be in ♋ , ♌ , or ♍ , the husband will possess money, but be very mean over it, and the marriage does not prove a happy one.

h_2 in ♂ or bad aspect to ♀ .—Disappointment in courtship or marriage; much trouble and grief through females, a depraved taste; addicted to secret and unnatural practices; often filthy in talk and behaviour; deceitful and cunning; hypocritical, especially in religion. This applies more to males than females. It often leads to drink or intemperance.

h_2 in good aspect to ♀ .—Success in courtship; steady; attached to wife and family; acute in feelings, soon moved to pity and tears; persevering and careful. It is very good in a feminine nativity, as it shows care, prudence, chastity, and sincerity.

h_2 in ♂ or afflicting ♃ .—Deep in thought; bad temper; bitter, malicious, and spiteful; frequently some impediment in the speech; often dishonest, deceitful and crafty, not to be trusted; addicted to drink; in the 3rd or 9th, it gives great inclination for science and occult learning, but attended with but little success; enthusiastic and hypocritical in religion; a false friend and malicious enemy.

h_2 in good aspect to ♃ .—Steadiness in character and behaviour; very careful of their own affairs and health; fond of science, and generally possessing a good judgment; persevering, thoughtful, and contemplative. Much, however, depends on the houses and signs occupied; the *airy* signs being especially good, and the *watery* signs but very little so. Again if in the 1st, 3rd, or 9th, the effects are very marked, but in the other houses much less so.

h in ♂ or afflicting the D .—Loss of substance and much trouble in money matters all through life ; the native squanders his money and is improvident, fretful, and suspicious ; careless and allows himself to be robbed chiefly by false friends ; he fails in business and has a hard struggle through life ; he generally gets a useless wife, one without thought, and if the planets are in *common* signs, he will marry more than once. When the planets are occidental it leads to temporary derangements of the health ; falls and accidents if oriental. I consider the affliction of the D by h , as the most unfortunate influence that can be for success, prosperity or happiness in life. With females it is very evil, generally resulting in disgrace, fondness for drink, and depravity ; it also destroys the health, especially if at the same time ♀ be afflicted.

h in good aspect to the D .—Very patient and persevering, leading to success and the acquisition of wealth ; in a female natus, good health, industrious and prudent.

NOTE.—The remarks at the end of H on page 45 will also apply here and must not be overlooked

CHAPTER III.

Jupiter

♃ in the ascendant in the *fiery* signs makes the native generous, bold, good-natured, successful in business, a sincere friend and a generous enemy ; rather proud ; delighting in exercise and recreation ; firm, faithful, and constant. In the *earthy* signs, more secret and selfish, proud, conceited, shallow-minded, ostentatious, bigoted. In the *airy* signs, just, generous, even in temper, faithful, ready to lend and help any one, especially if in ♌ or ♍ . In the *watery* signs, fond of sport, drink, and merry-making ; careless in money matters, but generally fortunate. ♎ and ♏ are better than ♐ , the latter sign inclines to “self.” The general character of ♃ is

to make men free, brave, and generous ; faithful and prudent ; just, honest and religious ; aiming at distinction and honour ; liberal subscribers to public charities ; hating mean and sordid actions.

♃ in the 2nd.—Wealth and a bountiful share of prosperity during life if he be essentially dignified ; the most successful men living have ♃ in the 2nd or 10th. The success or otherwise will depend upon the strength and aspects which the planet receives.

♃ in the 3rd.—Short, pleasant journeys ; help from neighbours and brethren. The mind honourably inclined.

♃ in the 4th.—Success in life, and happiness in old age, if ♃ be strong and moderately well fortified ; it also shows the father to be in a good position. If ♃ be weak and out of dignities, the native will die poor.

♃ in the 5th.—Dutiful and obedient children, who will be a help and comfort to the native, and who will do well in the world and become great men. If ♃ be strong, gain by betting, racing and speculation.

♃ in the 6th.—Good health generally, unless ♃ be much afflicted by aspect or position ; in ♀ or ♁ it deranges the chest and bowels ; it also denotes good, faithful servants

♃ in the 7th.—Success and happiness in marriage ; good for lawsuits and partnerships, and in dealing with others. If ♃ be in ♁ expect but little, for he seems to be sadly debilitated in this sign, and powerless to effect any good.

♃ in the 8th.—Money by marriage, and also by will or legacy, especially if ♃ be strong and in favourable aspect to Saturn.

♃ in the 9th.—A religious turn of mind, sincere and moral ; prudent and much respected ; benefit from relatives by marriage, and success in long journeys or foreign lands.

♃ in the 10th.—This ensures success in life, and much honour and esteem among men. ♃ in this house or in the 2nd, are the best “ positions ” that can be for success and prosperity, such persons generally hold prominent official

appointments. The success can best be judged by the strength and aspects which ♃ receives.

♃ in the 11th.—Good, faithful friends, ready to help the native, and he profits much through their instrumentality and advice particularly if ♃ be strong. It is also favourable for offspring and family matters.

♃ in the 12th.—Few private enemies, and those not likely to do the native any harm. If anything this position tends to success in life.

THE CONJUNCTIONS AND ASPECTS OF JUPITER.

♃ in ☿ or evil aspect with ♀.—This leads to prodigality; generous to excess; headstrong; foolish with money; indiscreet, often in trouble; these aspects often cause the native to lose heavy sums of money, either by betting, speculation, or false friends. He may also suffer damage by fire or thieves. It tends to destroy the issue of the native.

♃ in good aspect with ♀.—Brave, free, and generous; always ready to help another. Note the aspects of ♀ to ♃ are *never* good for the acquisition of wealth; the *evil* aspects shows losses beyond the native's control, and the good ones, that he will squander it away himself.

♃ in ☿, ♀ or good aspect to the ☉.—Success, and the acquisition of money and fame; powerful friends, and assistance from them, good health, and usually long life. The ☿ of ☉ and ♃ predisposes somewhat to apoplexy, and this disease not unfrequently terminates the native's existence. In a female's nativity, these aspects show an honourable and happy marriage, more especially if ♃ be strong, essentially and the ☉ free from the aspects of the malefics.

♃ afflicted by the ☉.—Loss of fortune, and much ill luck during life; let the native beware of lending money or becoming surety. He not unfrequently becomes involved in law, which goes against him, and results in heavy loss of money, or any property he may have; squanders his wealth

and becomes poor at the close of life. With a female, it denotes that she will get a good but unfortunate husband.

♃ in ♂ or good aspect with ♀.—This is not of much importance; rather favourable for success; the native will be fond of dress and ornament and spend much of his money thereon; with females it inclines to prudence and chastity. It inclines the disposition to be kind and generous.

♃ afflicting ♀.—He squanders his money over dress, ornament, and females, and often lives beyond his means; is high and proud in his ways. The same refers to a feminine nativity. Such persons always desire the best of everything, whether they can afford it or not.

♃ in ♂ or good aspect to ☿.—Good and sound judgment; success in literature, by which he makes money; he is free, generous, yet steadfast and sober in his ways; it also inclines to general success in life, and helps the native out of trouble.

♃ afflicting ☿.—Not good in judgment, but sees things in the wrong light; inclined to wrangling and to be irreligious; of no steadfast ways; persons so born should be extremely careful of their conduct, as it often leads them to law, and sometimes to something worse, for which they get punished.

♃ in ♂ or good aspect to the ♃.—This is very good, being one of the best aspects that can occur for success and prosperity in life, and the acquisition of wealth; it also denotes success in marriage, and a good wife; in a female nativity, good health, prosperity, and prudent conduct.

♃ afflicting the ♃.—The native squanders his wealth, and brings himself to ruin or poverty; is very unfortunate, and should never speculate, or engage in risky adventures; these aspects not unfrequently derange the liver and stomach.

NOTE.—*The remarks at the end of H on page 45 also apply here. Everything depends on the strength or weakness of a planet, and how it is aspected.*

CHAPTER IV.

Mars.

THIS planet in the ascendant in *fiery* signs makes the native bold, determined, persevering, headstrong, generous, angry, and haughty; in the *earthy* signs, covetous, selfish, malicious, careful, fond of women, quarrelsome, and sometimes fond of drink; in the *airy* signs, fond of travelling, changes, persevering, but not fortunate; in the *watery* signs, a good sailor, but much given to drink and women, especially in ♃ or ♆; in ♁ he makes an excellent chemist or doctor. Generally the nature of ♂ is daring, ungovernable, independent, rash, strong, stubborn, aspiring, and ambitious; the native usually has a mole or scar on the face.

♂ *in the 2nd.*—Lavish and careless in expenses, improvident; yet determined in the acquisition of wealth, but liable to sudden and heavy losses; the native rushes into speculations and enterprises without thought or reason; he is very generous.

♂ *in the 3rd.*—Danger in travelling by rail; disputes and losses through neighbours and brethren; stubborn and headstrong in disposition; fond of travel or changes.

♂ *in the 4th.*—Heavy troubles in old age, unless ♂ be strong, essentially; poverty and distress; it also threatens the father. This is a bad position in any nativity.

♂ *in the 5th.*—Unruly and troublesome offspring, some of whom die early and suddenly; fondness for pleasure, women and drink; loss by gambling, betting, or speculation; in a female's natus it threatens disgrace.

♂ *in the 6th.*—In *fixed* signs, sore throat, stone and gravel, heart disease and quinsey; in the *common* signs, danger of consumption, weak chest and lungs; in the *cardinal* signs, danger of burns, scalds, diseases of the kidneys, rheumatics, fevers, etc. It also denotes bad servants, who will rob and abuse the native.

♂ *in the 7th.*—An unfortunate marriage, and probably separation; constant quarrels; many persistent enemies in business; loss by law; ill-success in partnerships; the native is very prone to enter into quarrels and disputes, injuring himself thereby; with a female the effects are similar, and it also threatens her chastity.

♂ *in the 8th.*—No money by marriage; extravagance on the part of husband or wife.

♂ *in the 9th.*—Headstrong, stubborn, and jealous; given to falsehood; of no religious principle; danger in travelling long distances, especially if ♂ be in a watery sign. Losses by relatives through marriage.

♂ *in the 10th.*—Bold and conceited, bigoted; quick in judgment and very passionate; if ♂ be near the *cusps* of 10th, liable to slander and discredit (especially if a female), whether deserved or no.

♂ *in the 11th.*—Evil and malicious "friends" injuring the native, and by whom he loses much money; is imposed upon by them and misled by their advice.

♂ *in the 12th.*—Secret enemies, danger of imprisonment, of injury by large beasts, by burglars or robbers, especially if ♂ be afflicted by ♃ or ♄.

THE CONJUNCTIONS AND ASPECTS OF MARS.

♂ ♂, or afflicting the ☉.—The native is bold, intrepid, rash and firm, headstrong, determined, quick in anger; rushing headlong into any speculation, fearless of danger; generous and free; in the *watery* signs, it inclines to drink. It gives a liability to feverish complaints, and a sudden or violent death; the native is usually strong and healthy. The student will remember that the ♂ and ♀ are not so unfortunate as the *evil* aspects. With females it acts unfavourably, denoting an unhappy marriage; the husband will possess a very violent temper, and a fondness for drink; very austere, exacting and difficult to please; should ♃ or ♄ aspect the ☉ also, the husband is likely to die *suddenly*, or get killed by accident.

♂ *in good aspect to the ☉.*—The native is generous, free, and bold; of great bodily strength, a good constitution and usually long life; he is much respected by superiors and meets rapid advancement; especially in the army or in government service. This is especially the case if ♂ be strong in the nativity. With a female it denotes marriage to a noble and high-minded person, and probably one who is in government employ.

♂ ♂, *or afflicting ♀.*—Much given to the society and pleasure of females; lewd and wanton in desires; void of self-respect; generous and careless over money; given to drink and pleasure seeking to the injury of his health; regardless of money or expenses. With females it inclines to low company, and many regrettable actions.

♂ *in good aspect to ♀.*—Very fond of the opposite sex, and much respected by them; fond of company and society of all kinds; free and careless. With females it acts similar to the bad aspects.

♂ *in ♂ or afflicting ♀.*—Quick, active wit; fond of wrangling and disputing; addicted to falsehood and pilfering, forgery and other ruinous habits; sarcastic; possessing a good judgment, aspiring to be foremost whether in good or evil; generally very clever at any handicraft; a good workman, but often fond of drink.

♂ *in good aspect to ♀.*—Good arithmetician, very accurate; of good mental qualities, quick and piercing intellect, easily angered; very clever at engineering or chemistry, and in any occupation requiring dexterity of hand and sharpness of wit; the native is active, hating laziness, and continually scheming or making something.

♂ *in ♂ or afflicting the ♃.*—Of a turbulent, headstrong mind; indiscreet and rash, plunging headlong into good or evil; fond of the opposite sex, by whom he suffers in health and pocket; persevering, of a quick wit, given to falsehood; brave and generous. To a male it denotes an unhappy marriage, much quarrelling, and generally to a drunken,

worthless woman. With a female it threatens injury to the health, sickness and vexation, and often leads them into disgrace.

* $\text{\textcircled{♂}}$ *in good aspect to the* $\text{\textcircled{♃}}$.—Courageous, brave, daring and resolute; successful in dealing with others; it *tends* to success in wealth; very firm; but sometimes indulging in fits of sensuality and drink. With a female it shows good health and a strong constitution, much activity of body and mind, a real worker.

NOTE.—See the remarks at the end of $\text{\textcircled{♃}}$ on page 45 and apply them here.

CHAPTER V.

The Sun.

OF all the planets the $\text{\textcircled{☉}}$ is the most powerful, and without his presence this world would speedily become a corpse, a vast blank, void of life. When in the ascendant at birth, it makes the native firm, generous, lofty, proud, and magnanimous, scorning mean and sordid actions, imperious, confident, just and honest. In the *fiery* signs very ambitious, quick in anger, and aspiring to rule over all with whom he comes in contact; grave, and of few words, and speaking to the purpose; in the *earthy* signs, the native is proud and haughty to excess, opinionative, and headstrong; in the *airy* signs, just, noble, aspiring, and much given to science and arts; in the *watery* signs, rather lewd and fond of the opposite sex, even to his own prejudice; in $\text{\textcircled{♃}}$ he makes an excellent chemist or doctor, gaining fame and credit thereby. The position of the $\text{\textcircled{☉}}$ in the ascendant is fortunate for the prosperity of the native.

$\text{\textcircled{☉}}$ *in the 2nd.*—Very generous and free with money, spending it fast and lavishly; is careless over expenses, and squanders his estate. A Δ or $\text{\textcircled{♁}}$ of $\text{\textcircled{♃}}$ makes a great alteration, and leads to wealth and fortune, particularly if $\text{\textcircled{♃}}$ be strong.

☉ *in the 3rd.*—Fond of science and the fine arts; firm and steadfast in opinion, and removing the residence but seldom. In the *watery* signs, many short journeys by water, and in the *moveable* signs, much travelling by railway.

☉ *in the 4th.*—A good position, especially if the ☉ be strong, or well aspected, denoting success and fortune at the close of life. It also benefits the father.

☉ *in the 5th.*—Denies offspring, except the ☉ be in the *watery* signs, they are then likely to be weak and sickly, and will probably die, unless the ♃, ♄ or ♀ be there also, or aspect the ☉. The native delights in pleasure, and female company, and spends his money freely.

☉ *in the 6th.*—Not a good position for health, and if afflicted shows many long sicknesses, and if ☉ be in the *fixed* signs, quinsy, diphtheria, bronchitis, asthma, gravel or stone, heart disease, weak back and loins; in the *common* signs, danger of consumption (especially if in ♀ or ♁), and obstructions in the breathing organs. In the *moveable* signs, liver complaints, nervousness, weak chest and stomach, giddiness, and rheumatism; probably also some permanent hurt or injury.

☉ *in the 7th.*—The husband or wife will be proud, austere, yet sincere and honourable; lofty and high in manners, yet generous and well disposed; also good for business and partnership, but much will depend on how the ☉ is aspected, and in what sign he is placed.

☉ *in the 8th.*—Extravagance on the part of husband or wife and if afflicted by a ♀, ☐, or ♃ of ♀, danger of a violent or sudden death.

☉ *in the 9th.*—Honourable, firm and steadfast; just and faithful in his dealings with others; makes an excellent divine; if in a *watery* sign, it shows long sea voyages, and often success in foreign lands.

☉ *in the 10th.*—Honour and preferment; success in life, and the acquisition of riches; fortunate, much esteemed, and frequently elected to a post of honour.

☉ *in the 11th.*—Firm and faithful friends, and if ☉ be strong,

they are willing and able to help the native, and will do so ; but if weak and afflicted they will be a burden instead of a help.

☉ *in the 12th.*—Rather unimportant, but as the ☉ is above the earth it denotes success in life ; if the ☉ be much afflicted in this house, it shows imprisonment.

THE CONJUNCTIONS AND ASPECTS OF THE SUN.

☉ *in ♀ or any aspect with ♀.*—Fond of company and pleasure, and female society ; success in dealing with clothing, jewellery or apparel ; fond of music, singing, dancing, and all elegant arts and sciences. If in ♁ or ♀ given to drink and low company, and may become sottish. If the aspect happens in the 2nd, 5th, or 7th, he will spend much money on females and pleasure, wasting his time and fortune ; in the 10th, it leads to rapid promotion, and in the 4th, success in business. As ♀ is never more than 48° from the ☉, she can only form the ♀, P, ∨ and ∟ with that luminary.

☉ *in ♀ or P with ☿.*—This makes an ambitious and good business man ; learning with facility and ease ; studious, and comprehensive ; quick at figures ; consider the foregoing chiefly when in the 1st, 3rd, 9th, or 10th. If the ☉ and ☿ be in ♁, the native will possess but little wit, and be very conceited, talkative, fond of travelling ; void of any sound learning, dabbling in almost every branch of science, and mastering none ; vain and foolish. If in ♀, the native will be a great doctor or chemist. It has often been said that the ☉ and ☿ in ♀ impairs the native's faculties. I am not of this opinion so far as business or literary ability is concerned, but for *clear*, sound, intuitive perception, and *deep* contemplation, ☿ is best away from the beams of the ☉. As ☿ is never more than 28° from the ☉, it can only form the ♀ and P with that orb.

☉ ♀, *or in good aspect to the ♃.*—Success in life ; rapid promotion ; prosperity, and help from powerful persons ; honour and esteem. Persons born with the ☉ and ♃ in good

aspect seldom have any difficulty in obtaining employment. These aspects also strengthen the constitution both of male and female, and with the former denotes marriage to a high-minded noble-dispositioned person.

☉ *in evil aspect with the* ♃.—Difficulty in money matters; trouble in getting into employment or other office; loss by speculation and females, whom the native should avoid. It also weakens the health or constitution and produces long and serious sicknesses; gives great liability to colds and influenza.

NOTE.—*The position of the sun and moon in a nativ should be well studied. They are the two most powerful planets and on them depends mainly the health and success of the native. See the remarks at the end of H.*

CHAPTER VI.

Venus.

♀ *in the ascendant* makes a person much beloved by the opposite sex, fortunate and gaining thereby; fond of pleasure; good disposition; generous, merry and kind, and usually a good singer or musician; ♄, ♀, (♁), ♃, and ♆, are the best signs, ♁, ♀, ♃, and ♄ the worst, especially ♃, for it makes the native lewd, low, and indecent, fond of drink and loose women, especially if ♂ should be in aspect. ♂ in aspect to ♀ makes a good painter or artist, actor and singer, the voice is sweet, musical and even; they excel on the stage, or in any occupation or profession that brings them in contact with the multitude; the constitution is not usually strong, and the habits of living seldom conduce to health and long life; their temper is even, and their ways winning.

♀ *in the 2nd.*—Promises success in life, and lucrative pursuits, if strong; yet the native spends much on ornament, dress, jewellery, and females, and in pleasure-seeking, and