





THE ROUND TABLE OF KING ARTHUR.

From the Original, preserved in the Court-House of the Castle at Winchester.  
 "SANGREALE"—or "HOLY GRAIL."

LUNATIONS.

13 Lunations.

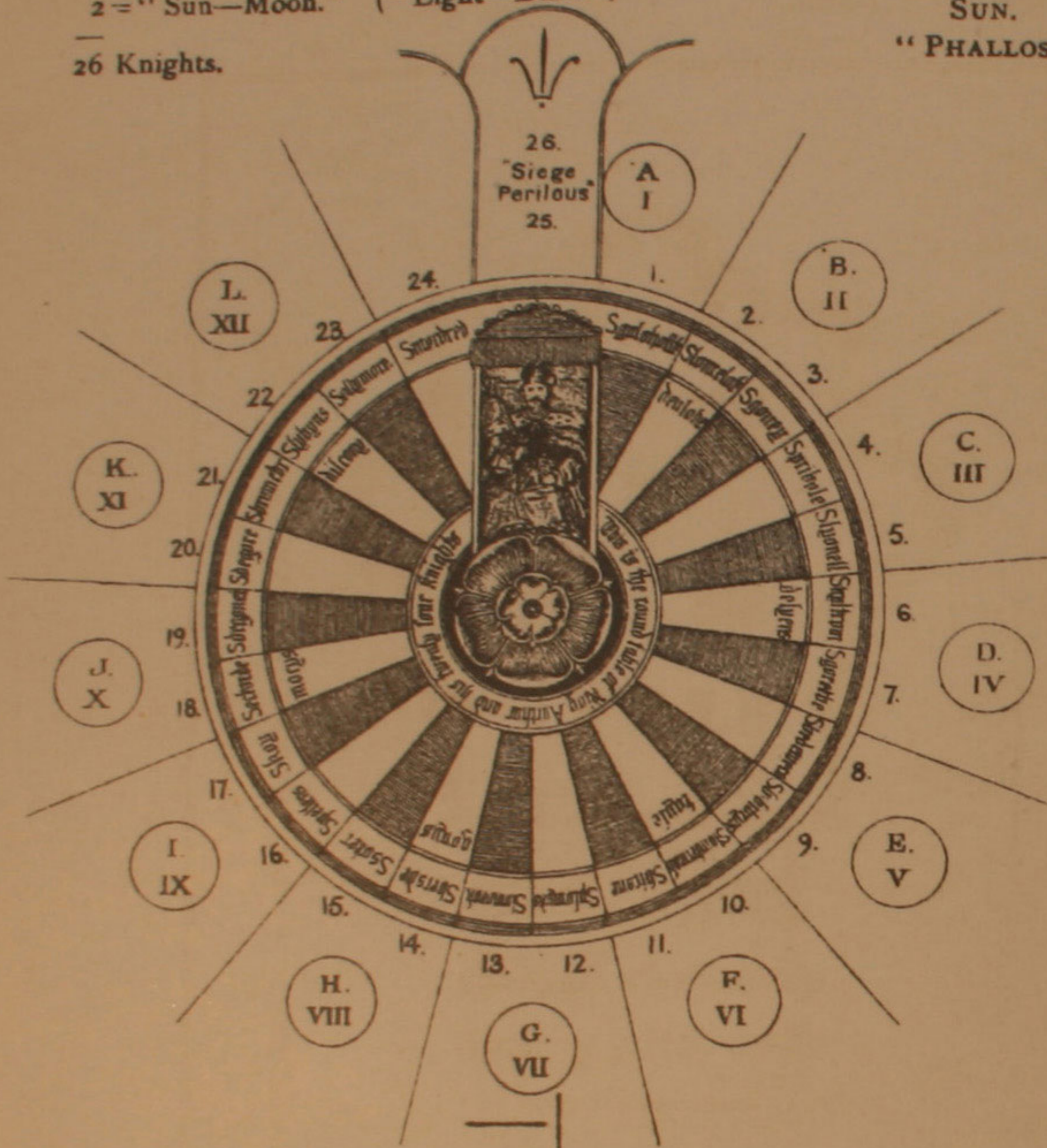
2 = "Sun—Moon." ("Light—Dark.")

26 Knights.

Royal Seat.

SUN.

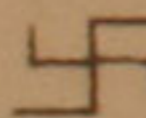
"PHALLOS."



12 (Twin)-Knights.  
 (1 Place, each Knight; for "Mystic Lunation.")  
 1 each, 24  
 1 Knight, 2 Places.  
 Total, 26

These are the Mystic Guards of the Holy — the "SANGREALE," or HOLY GRAAL, or GRAEL.

Natural—Supernatural.

Mysterious  Tau.

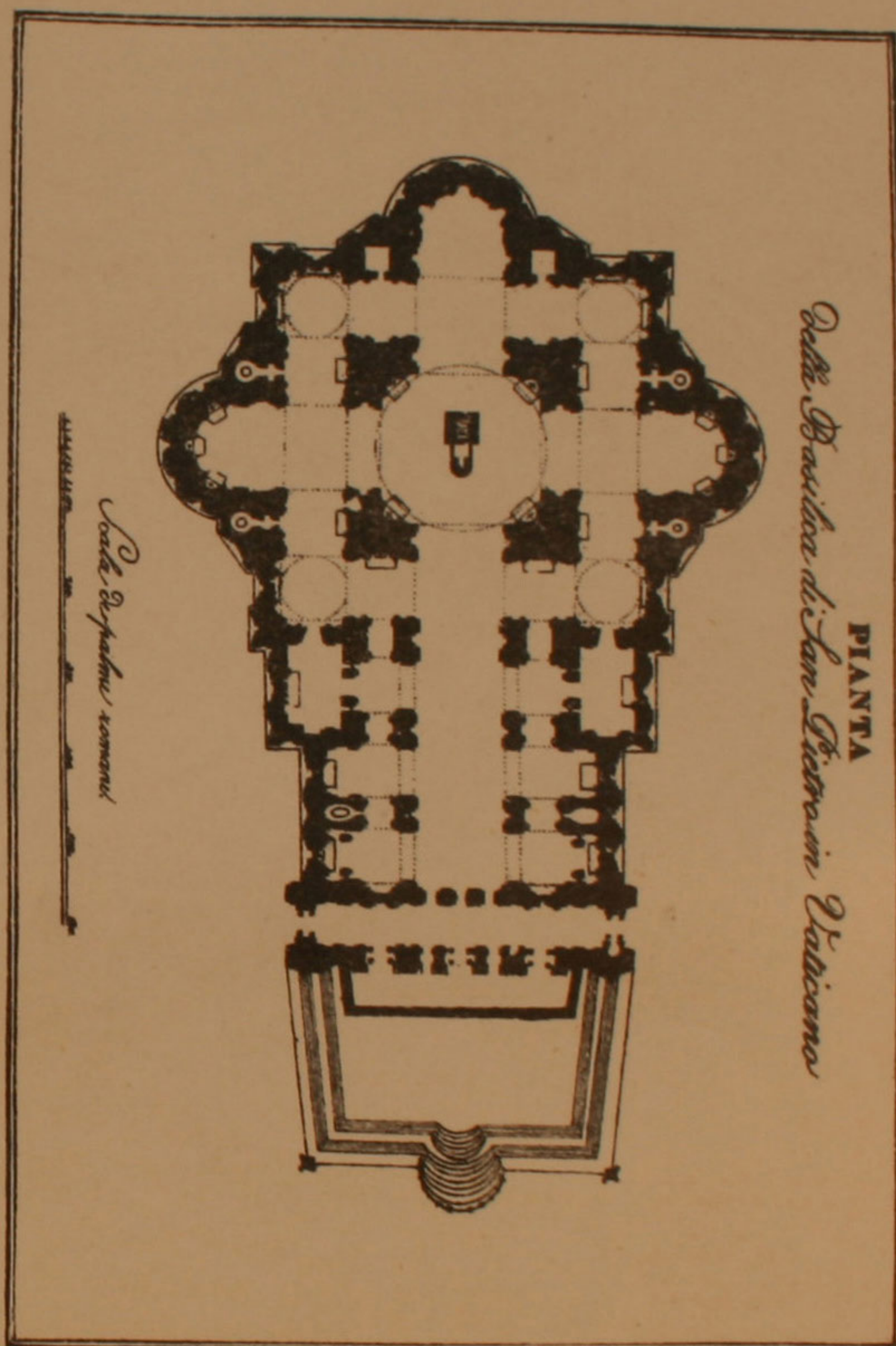
\* TRADITION, that Judas Iscariot left the Table at the words of the Saviour—"What thou doest, do quickly!" and had *no portion* in the Last Rite. (Refer below.)

- |    |                           |    |               |
|----|---------------------------|----|---------------|
| A. | Saint Matthew.            | G. | Saint Philip. |
| B. | Saint James.              | H. | Saint Libœus. |
| C. | Saint Simon.              | I. | Saint Andrew. |
| D. | Saint Peter.              | J. | Saint Thomas. |
| E. | Saint James (of Alpheus). | K. | Vacant.       |
| F. | Saint Bartholomew.        | L. | Saint John.   |

"After the sop, Satan entered into him. Then said Jesus unto him, 'That thou doest, do quickly!' Now no man at the table knew for what intent He spake this unto him.  
 "He" (Judas) "then having received the sop, WENT IMMEDIATELY OUT. AND IT WAS NIGHT."  
 S. JOHN, Chap. xiii., vers. 27, 28, 30



PLAN OF THE BASILICA, ST PETER'S in the "Vaticano."

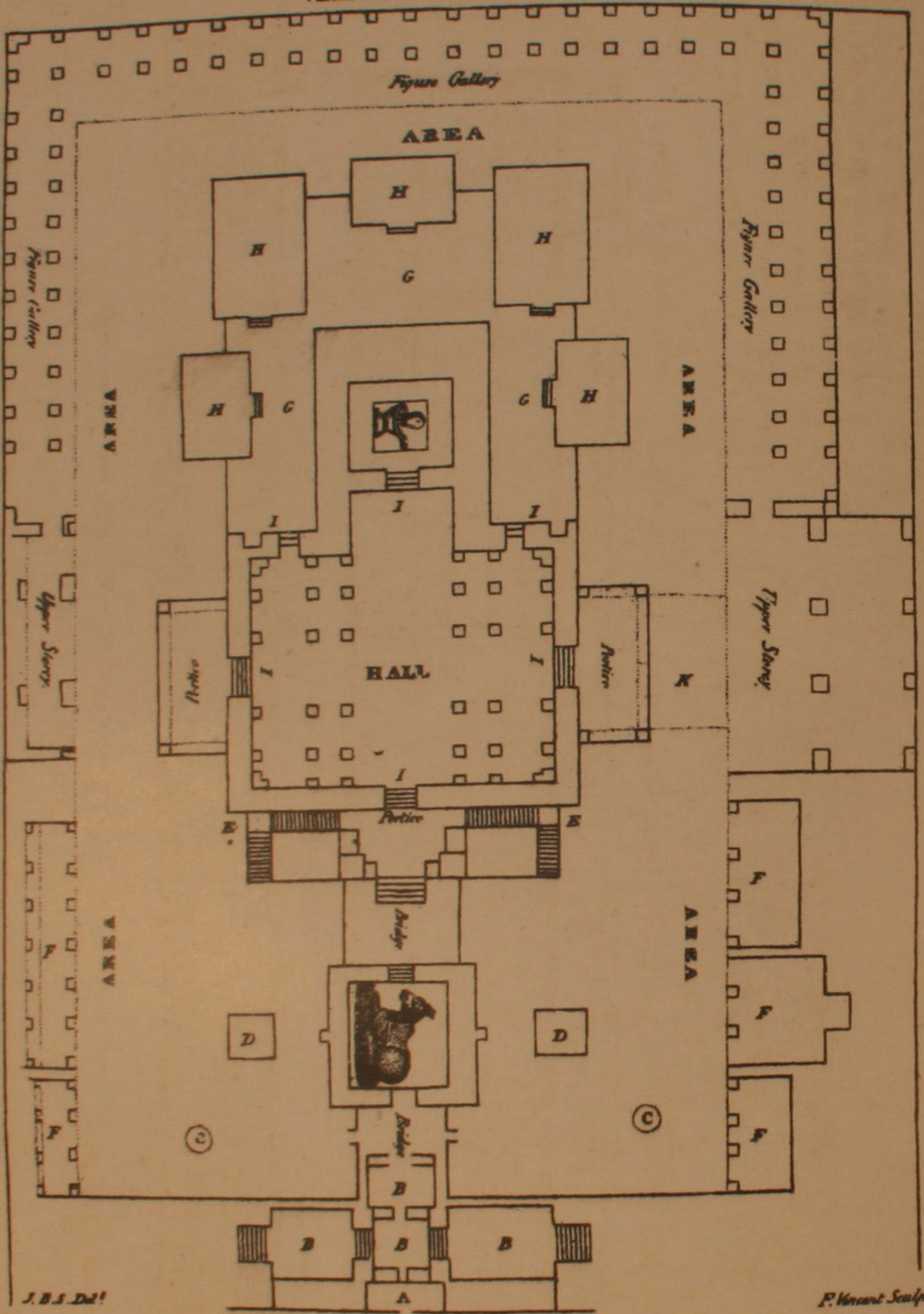


1. Duomo—"Dom" (Central Sacred Point).



TEMPLE OF KEYLAS, or PARADISE.

(Ellora, in the East Indies.)



THE INSULATED TEMPLE OF KEYLAS, OR PARADISE,

*Carved out of Ellora Mountain*

A. Linga-Yoni (combined).

This Plate (with the previous) illustrate the parallel between  
Heathen and Christian architectural forms.

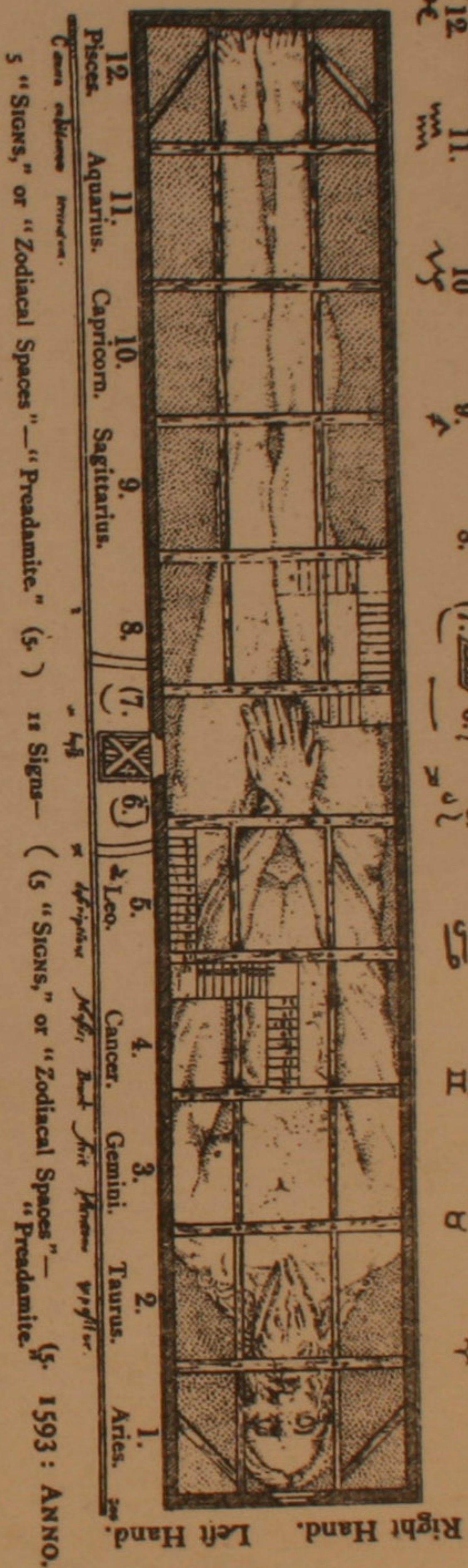
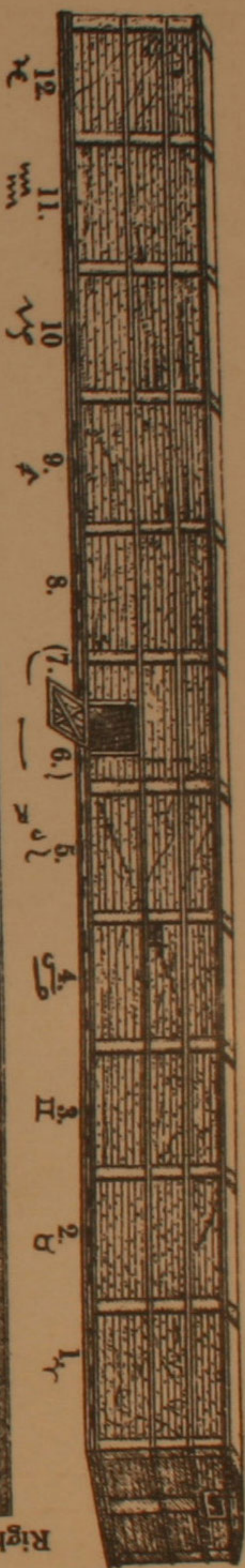
(N.B.—The period of the construction of the above Temple transcends history.)



MYSTERIUM.

LUGDANI BATAVORUM.  
(Engraved in the year 1593.)

*Forma, generis, aetatis, sexus, dignitatis, Mysterii.*



ROSIKRUICIAN SYSTEM.

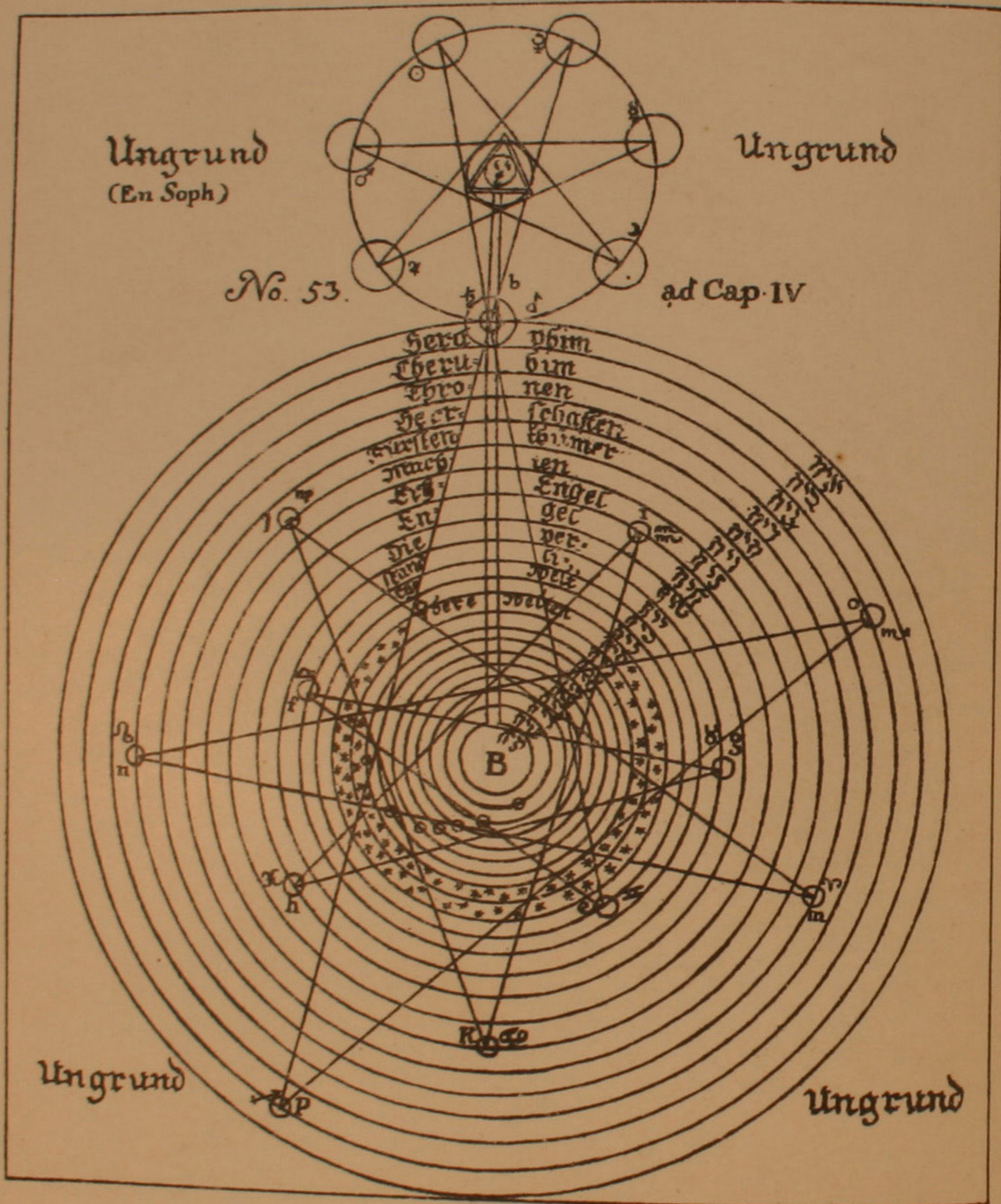
Structure (Symbolic) of the "Argba," or  
"Arc." Also—

(Forms—exterior and interior—of the  
"Ark of Noah," from the description of  
Moses.)

\* Place of the "Escaped" Signs.



ASTRONOMICAL AND ASTROLOGICAL "ROSIKRUCIAN" PLAN.







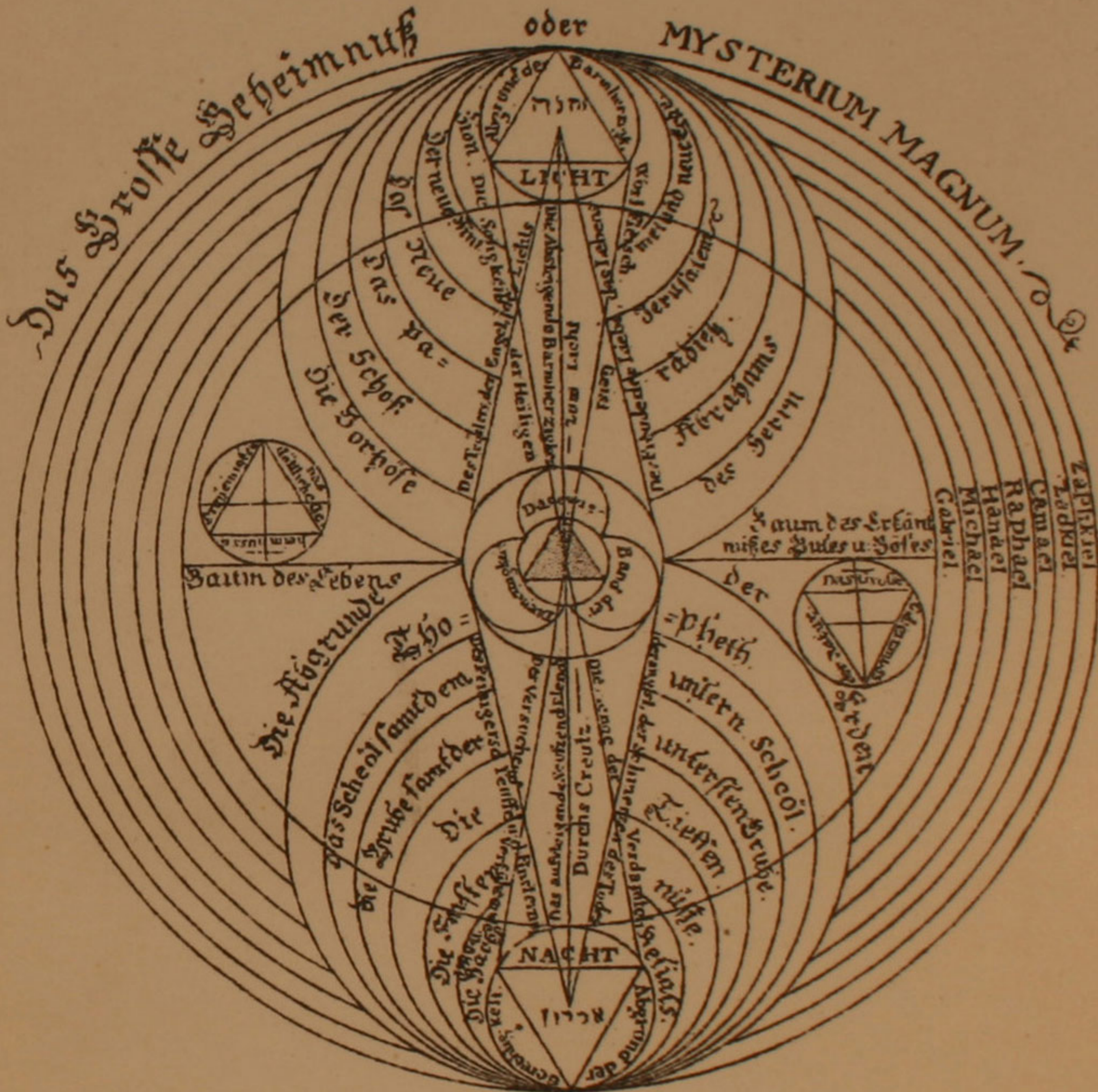






CHART—B.

Fig 9. ad c iv. § 26.



Cabalistic (Rosicrucian.) "Natural—Supernatural." "Light—Dark."

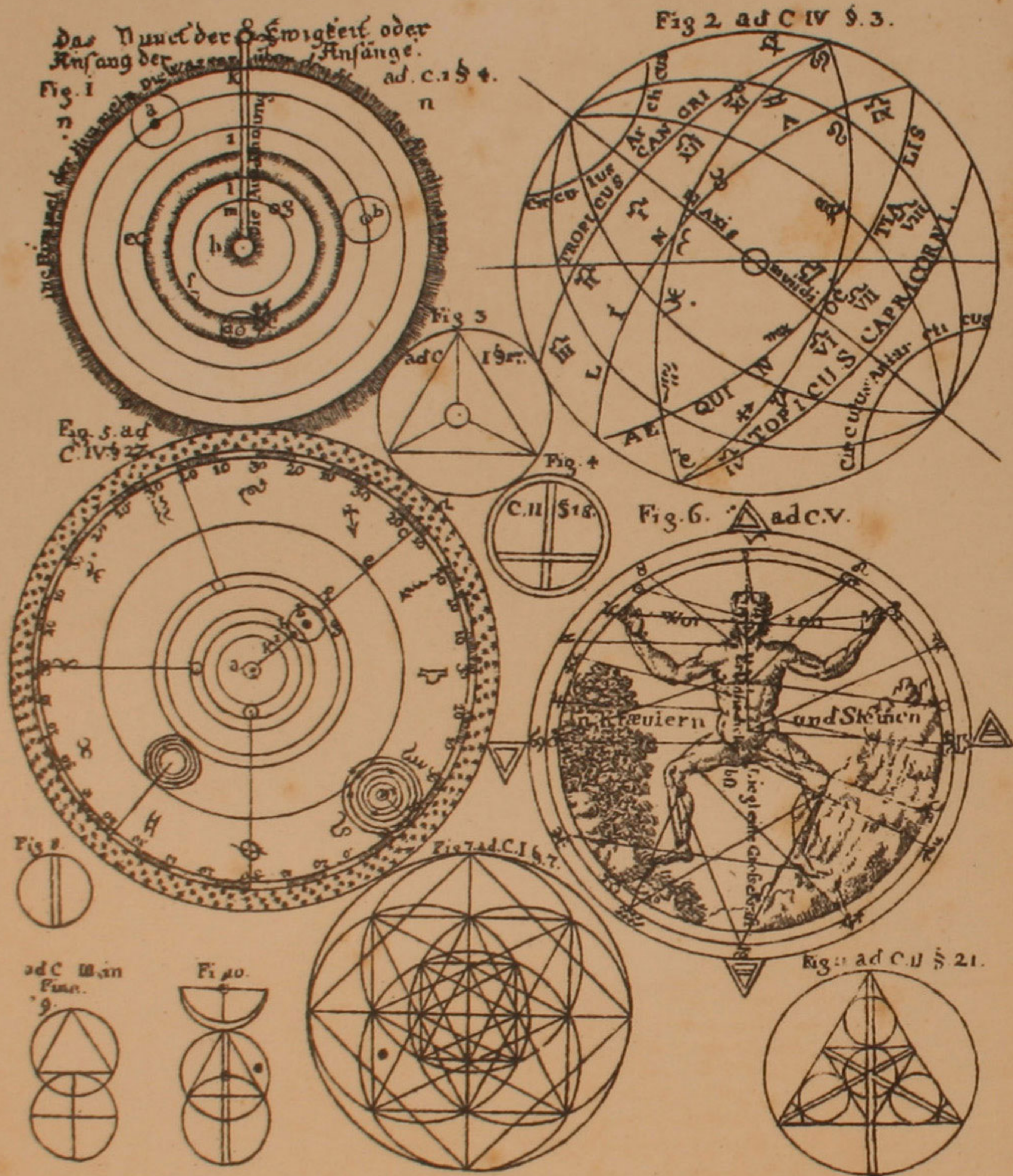
"Dark—Light : " (The Mysteries of "Their Interchange.")

N.B.—The references to Nos. and Chapters are to those corresponding in very ancient Rosicrucian Tracts or Charts—(adduced here to prove authenticity.)

*v. ill. top p. 424 (3 circles)*



CHART—C.



Cabalistic (Rosicrucian) Production of the "Worlds—Visible."  
 "Generation" of the "Microcosmos."

N.B.—The references to Nos. and Chapters are to those corresponding in very ancient Rosicrucian Tracts or Charts—(adduced here to prove authenticity.)







⊕ north  
 ♀ Mars ♀ Venus  
 ♀ made up of 0-1-1  
 0 Sun  
 0 Moon  
 0 Sun - 2 on  
 20 Picos

1377 - out  
 (Mars\*)

Rose Sun + 188  
 11 Gemini

The Lord of the  
 A stone  
 (Jupiter)

And the two for 1  
 0

A identidade entre o f. sta. e serpente - a se. i. o. p. s. - on  
 deus de deus - operando independentemente de deus em "rebellias"  
 "ser" entre mundos - a supermundos.

My should not all matter - on the ultimate Sun itself - he  
 appearance and all attainable knowledge, even of the  
 world as it is, by the power of the human mind  
 of the intellect. But in human, the  
 there has been different.



Books:

p. 229 - 355 - 37 - 189 - 42.

341

200

195

177

69-71

88.89.93.

447.

211-

44

May not - p. 181.

V. H. 184-5-6 =  
"membrum" means

190 - "membrum" means  
165 - "membrum" means  
p. 357 - "membrum" means  
211 - SS = V. May

Nature - resistana. ?  
 In May, relation to K. animals.  
 "intrusion" - some to  
 In West - of K. animals  
 "inside" (K. animals) in some  
 "K. animals" - animals to K.  
 "intrusion" - animals to K.  
 out of K. animals (K. animals)  
 The animal is "intrusion" (K. animals)  
 small of animals - K. animals  
 has West (ie. with "intrusion")  
 The animal, however, is not  
 "intrusion" - "intrusion"  
 K. animals - "intrusion"



